

# MESKER MBM, LLC

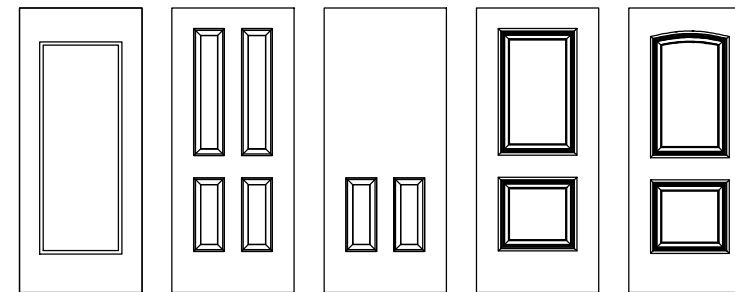
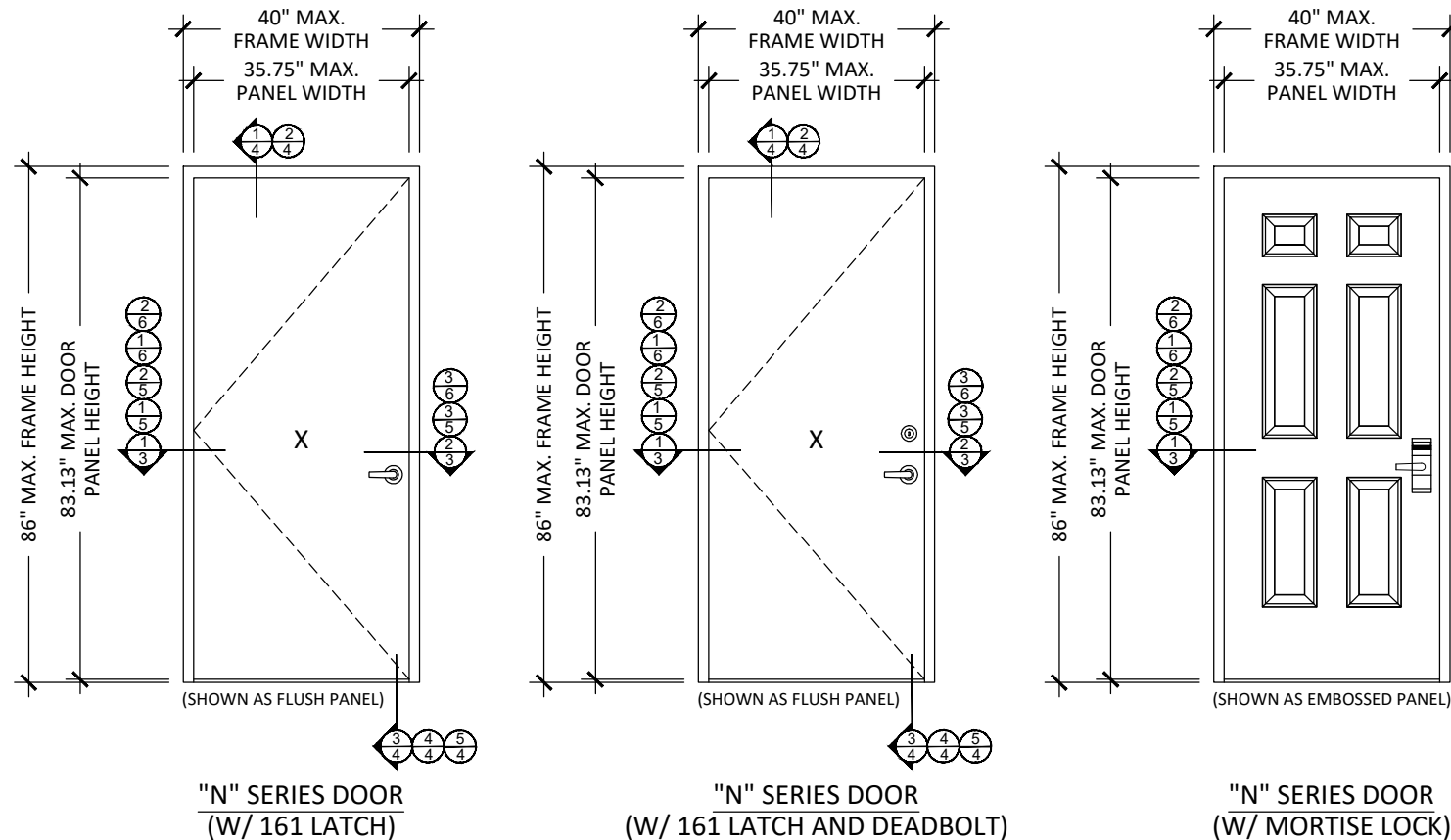
## "N" SERIES COMMERCIAL SINGLE OPAQUE DOOR INSWING (HVHZ) (IMPACT)



MESKER MBM, LLC  
3340 STANDWOOD BLVD.  
HUNTSVILLE, AL 35811  
PH: (256) 851-6670

### GENERAL NOTES

- THIS PRODUCT HAS BEEN EVALUATED AND IS IN COMPLIANCE WITH THE CURRENT FLORIDA BUILDING CODE (FBC) TAS 201-94, TAS 202-94, TAS 203-94 STRUCTURAL REQUIREMENTS INCLUDING THE "HIGH VELOCITY HURRICANE ZONE".
- PRODUCT ANCHORS SHALL BE AS LISTED AND SPACED AS SHOWN ON DETAILS. ANCHOR EMBEDMENT TO BASE MATERIAL SHALL BE BEYOND WALL DRESSING OR STUCCO.
- WHEN USED IN THE "HVHZ" THIS PRODUCT COMPLIES WITH SECTION 1626 OF THE FLORIDA BUILDING CODE AND DOES NOT REQUIRE AN IMPACT RESISTANT COVERING.
- SITE CONDITIONS THAT DEVIATE FROM THE DETAILS OF THIS DRAWING REQUIRE FURTHER ENGINEERING ANALYSIS BY A LICENSED ENGINEER OR REGISTERED ARCHITECT.
- INSWING CONFIGURATIONS DO NOT MEET THE WATER INFILTRATION REQUIREMENTS FOR THE "HVHZ". INSWING UNITS SHALL BE INSTALLED ONLY IN NON-HABITABLE AREAS OR AT HABITABLE LOCATIONS PROTECTED BY AN OVERHANG OR CANOPY SUCH THAT THE ANGLE BETWEEN THE EDGE OF CANOPY OR OVERHANG TO SILL IS LESS THAN 45 DEGREES.
- ALL STEEL SHALL BE PROTECTED AS SPECIFIED IN CHAPTER 22 OF THE FBC.



ADDITIONAL EMBOSSED PANEL OPTIONS

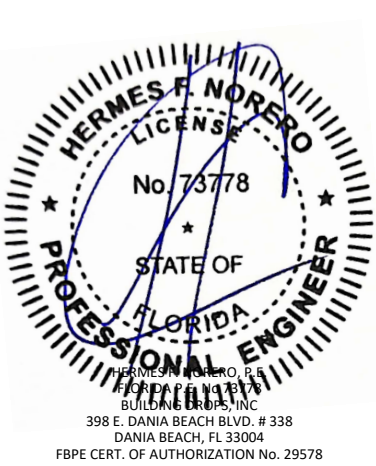
OVERALL FRAME SIZE		LOCK TYPE	DESIGN PRESSURE (PSF)	
WIDTH	HEIGHT		POSITIVE	NEGATIVE
40"	86"	161 LATCH (SCHLAGE)	+55.0	-55.0
40"	86"	161 LATCH & DEADBOLT (DESIGN HARDWARE)	+70.0	-75.0
40"	86"	86E MORTISE LOCK (ONITY)	+60.0	-75.0

TABLE OF CONTENTS	
SHEET	SHEET DESCRIPTION
1	TYPICAL ELEVATION, DESIGN PRESSURE & GENERAL NOTES
2	DOOR PANEL DETAILS 161 LOCK PERP
3	DOOR PANEL DETAILS 86E LOCK PERP
4	HORIZONTAL CROSS SECTION
5	HORIZONTAL CROSS SECTION
6	HORIZONTAL CROSS SECTION
7	VERTICAL CROSS SECTION
8	FRAME ANCHORING
9	ANCHORING DETAILS
10	COMPONENTS
11	BILL OF MATERIALS & COMPONENTS

TITLE: "N" SERIES COMMERCIAL SINGLE OPAQUE DOOR - INSWING (HVHZ) (IMPACT)  
TYPICAL ELEVATION, DESIGN PRESSURE & GENERAL NOTES  
PREPARED BY: BUILDING DROPS, INC.  
398 E. DANIA BEACH BLVD., STE. 338  
DANIA BEACH, FL 33004  
PH: (954)399-8478  
FAX: (954)744-4738  
WEB: www.buildingdrops.com

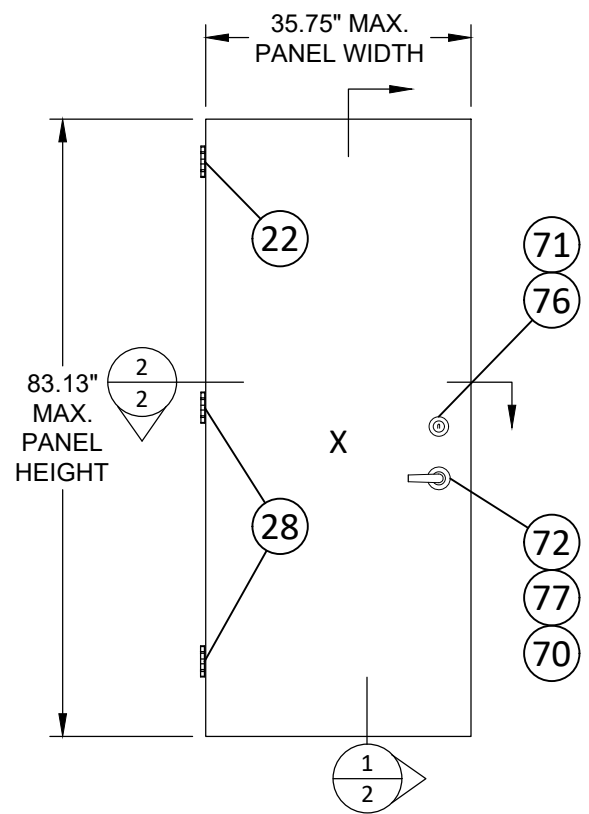
REMARKS	BY	DATE
2023 NAME CHANGE	MG	03/23

THE INSTALLATION DETAILS DESCRIBED HEREIN ARE GENERIC AND MAY NOT REFLECT ACTUAL CONDITIONS FOR A SPECIFIC SITE. IF SITE CONDITIONS CAUSE INSTALLATION TO DEVIATE FROM THE REQUIREMENTS DETAILED HEREIN, A LICENSED ENGINEER OR ARCHITECT SHALL PREPARE SITE SPECIFIC DOCUMENTS FOR USE WITH THIS DOCUMENT.

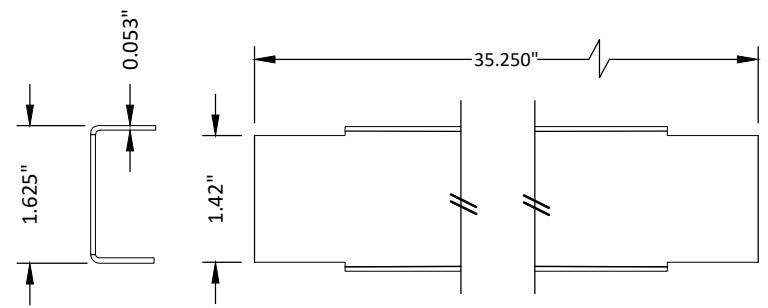


FL #:	<b>FL11218</b>
DATE:	<b>08.14.08</b>
DWG. BY:	<b>JK</b>
CHK. BY:	<b>FLS</b>
SCALE:	<b>NTS</b>
DWG. #:	<b>MDI014</b>
SECTION:	<b>1</b>

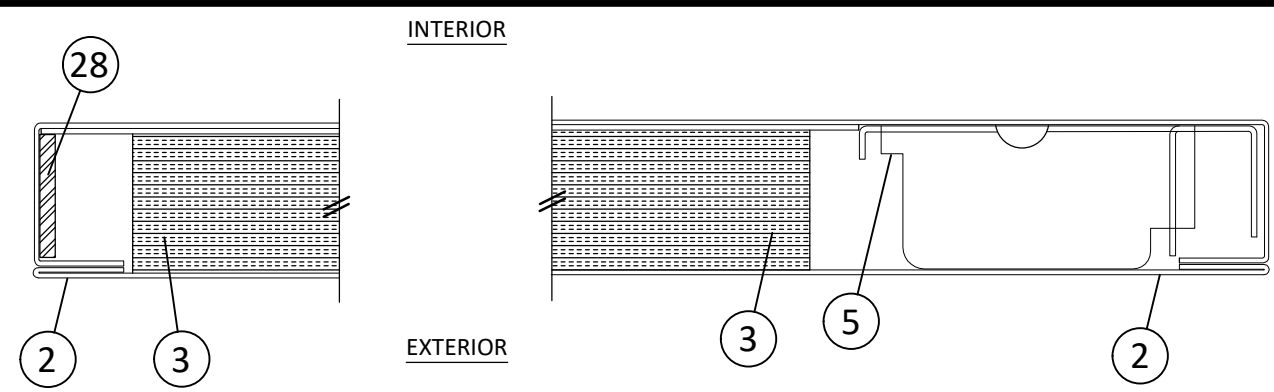
3/31/2023 8:53 AM  
z:\projects\mesker.mbm, llc\bc-23-0112 - fbc submittal - commercial steel doors\revisions\dwg\fl11218\mdi014.dwg



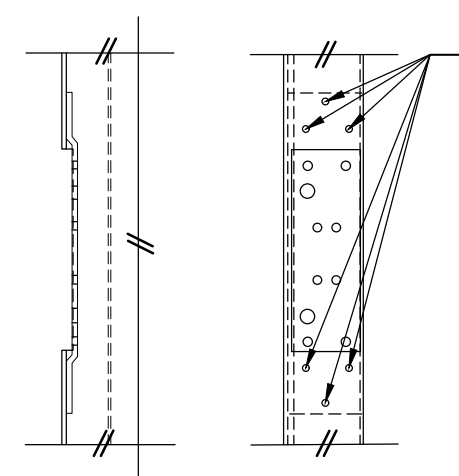
**1 "N" OPAQUE STEEL DOOR PANEL**



**4 DOOR TOP & BOTTOM CLOSER**

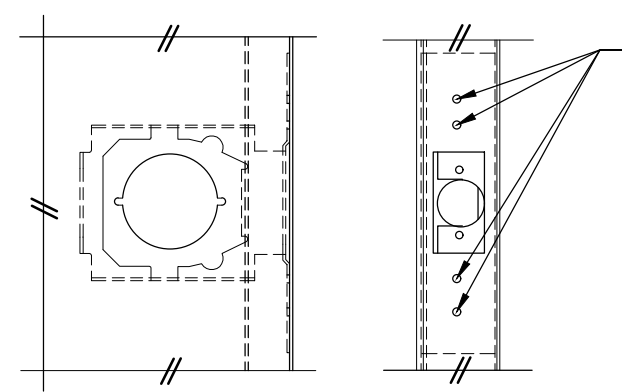


**2 HORIZONTAL CROSS SECTION DOOR PANEL**



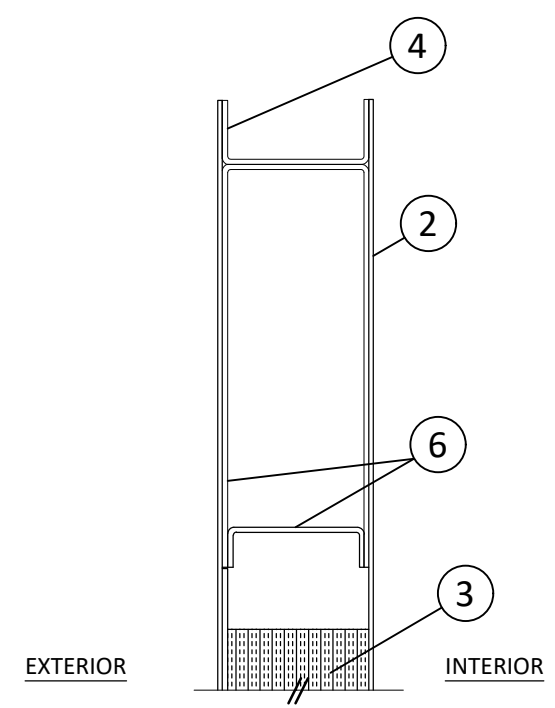
- 6 PROJECTION WELDS**
- 0.190" FUZED ZONE DIAMETER
  - 3/4" SPACING
  - AVG. TENSILE STRENGTH = 800 lbs

**23 DOOR HINGE REINFORCEMENT**

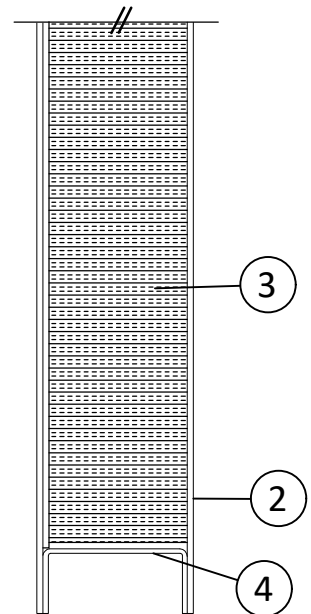


- 4 SPOT WELDS**
- 0.250" FUZED ZONE DIAMETER
  - 3/4" SPACING
  - AVG. TENSILE STRENGTH = 800 LBS

**5 LOCK BOX REINFORCEMENT**



**1 VERTICAL CROSS SECTION DOOR PANEL**



**MESKER MBM, LLC**  
3340 STANDWOOD BLVD.  
HUNTSVILLE, AL 35811  
PH: (256) 851-6670

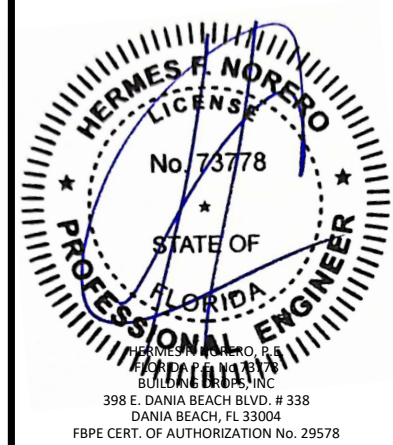
TITLE: "N" SERIES COMMERCIAL SINGLE OPAQUE DOOR - INSWING (HVHZ) (IMPACT)  
DOOR PANEL DETAILS

PREPARED BY: **BUILDING DROPS, INC.**  
398 E. DANIA BEACH BLVD., STE. 338  
DANIA BEACH, FL 33004  
PH: (954)399-8478  
FAX: (954)744-4738  
WEB: www.buildingdrops.com



REMARKS	BY	DATE
2023 NAME CHANGE	MG	03/23

THE INSTALLATION DETAILS DESCRIBED HEREIN ARE GENERIC AND MAY NOT REFLECT ACTUAL CONDITIONS FOR A SPECIFIC SITE. IF SITE CONDITIONS CAUSE INSTALLATION TO DEVIATE FROM THE REQUIREMENTS DETAILED HEREIN, A LICENSED ENGINEER OR ARCHITECT SHALL PREPARE SITE SPECIFIC DOCUMENTS FOR USE WITH THIS DOCUMENT.



FL #: **FL11218**

DATE: **08.14.08**

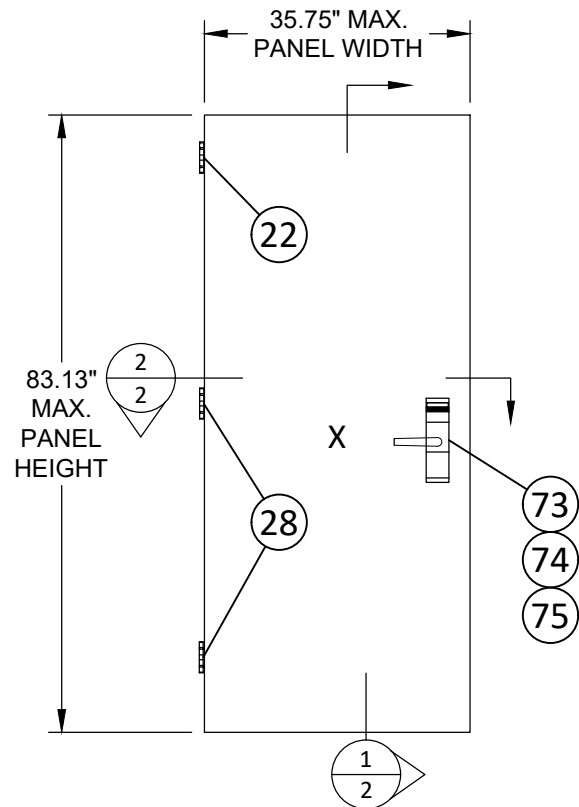
DWG. BY: **JK**      CHK. BY: **FLS**

SCALE: **NTS**

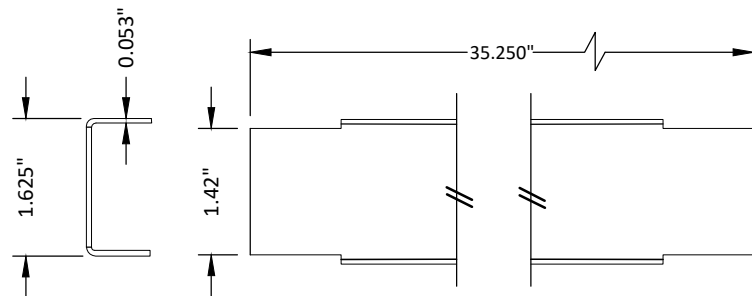
DWG. #: **MDI014**

SECTION: **2**  
OF 11

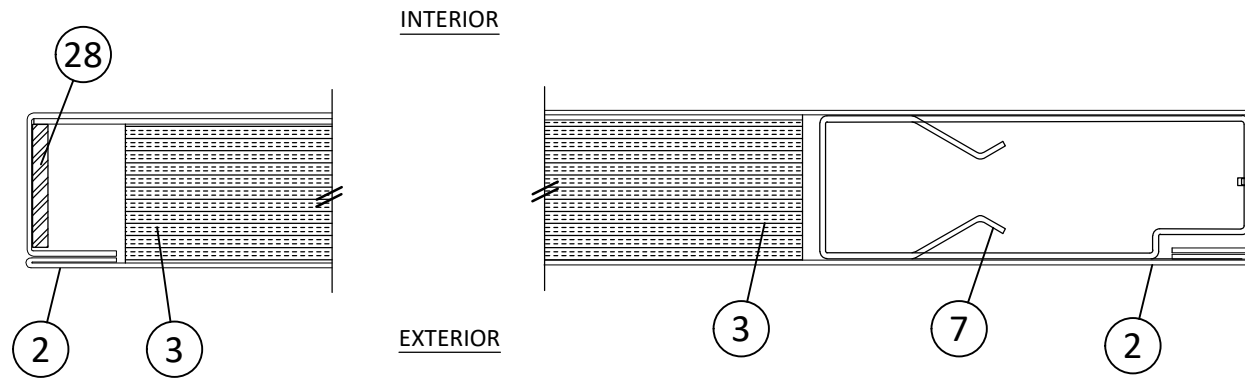
3/31/2023 8:52 AM  
z:\projects\mesker.mbm, llc\bc-23-0112 - fbc submittal - commercial steel doors revisions\dwg\111218\mdi014.dwg



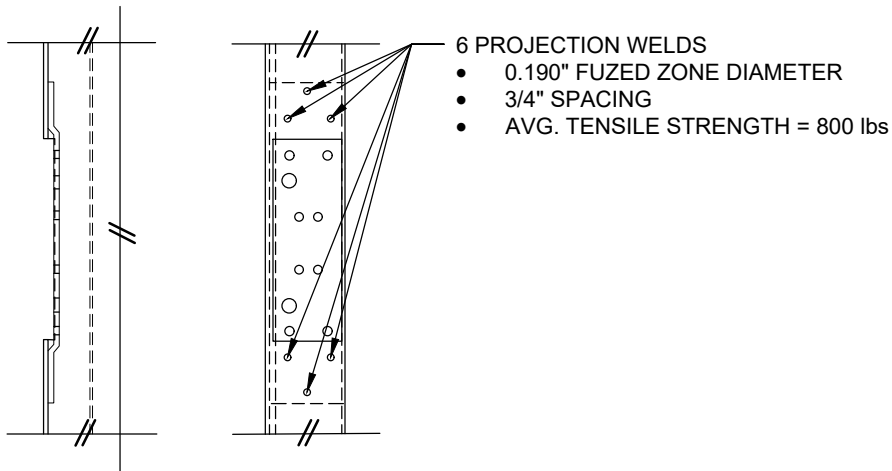
**1** "N" OPAQUE STEEL DOOR PANEL



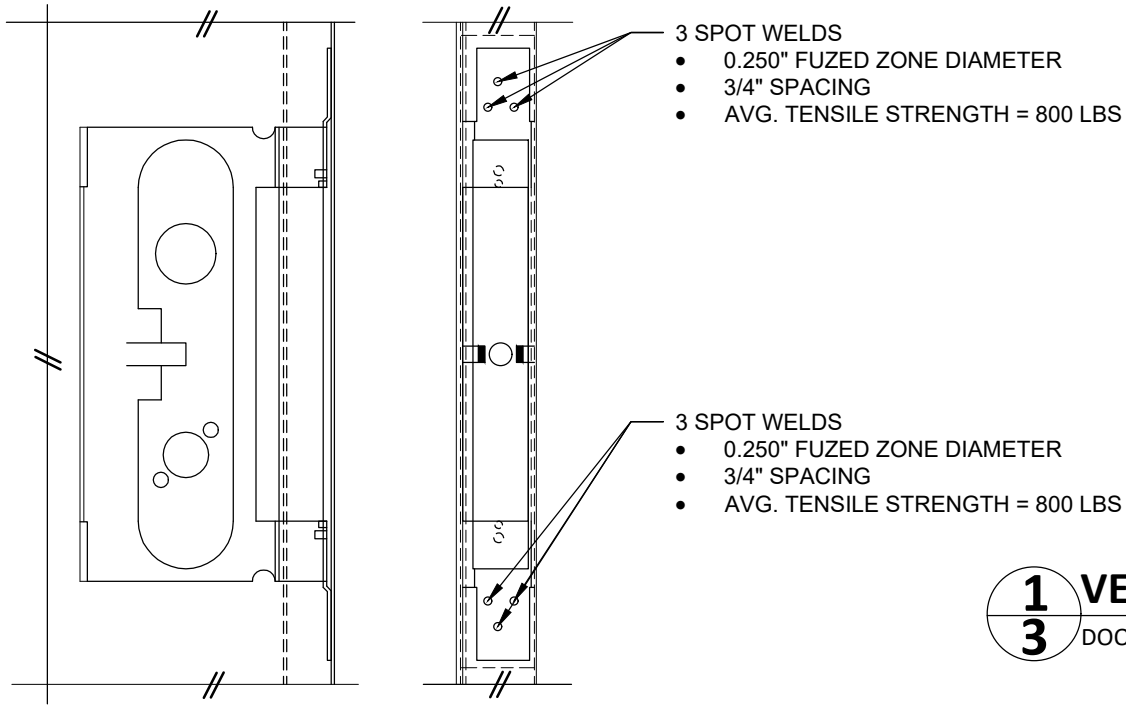
**4** DOOR TOP & BOTTOM CLOSER



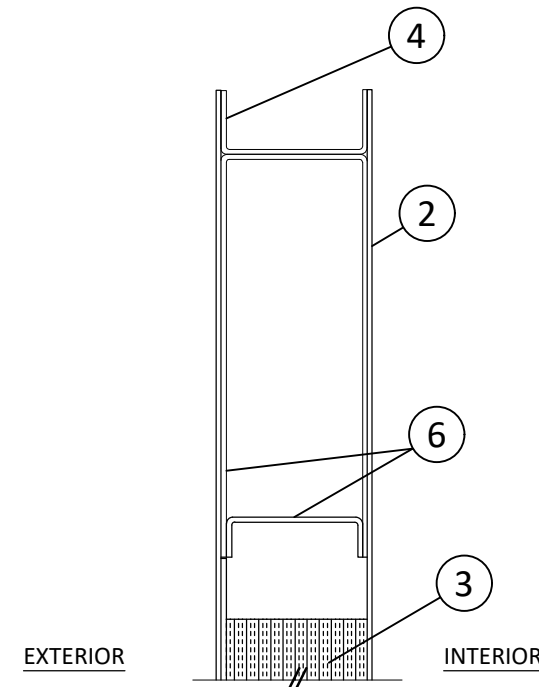
**2** HORIZONTAL CROSS SECTION  
**3** DOOR PANEL



**23** DOOR HINGE REINFORCEMENT



**7** MORITISE BOX REINFORCEMENT



**1** VERTICAL CROSS SECTION  
**3** DOOR PANEL

**MESKER.**  
SINCE 1879

MESKER MBM, LLC  
3340 STANDWOOD BLVD.  
HUNTSVILLE, AL 35811  
PH: (256) 851-6670

TITLE: "N" SERIES COMMERCIAL SINGLE OPAQUE DOOR - INSWING (HVHZ) (IMPACT)  
DOOR PANEL DETAILS

PREPARED BY: BUILDING DROPS, INC.  
398 E. DANIA BEACH BLVD., STE. 338  
DANIA BEACH, FL 33004  
PH: (954)399-8478  
FAX: (954)744-4738  
WEB: www.buildingdrops.com

REMARKS	BY	DATE
2023 NAME CHANGE	MG	03/23

THE INSTALLATION DETAILS DESCRIBED HEREIN ARE GENERIC AND MAY NOT REFLECT ACTUAL CONDITIONS FOR A SPECIFIC SITE. IF SITE CONDITIONS CAUSE INSTALLATION TO DEVIATE FROM THE REQUIREMENTS DETAILED HEREIN, A LICENSED ENGINEER OR ARCHITECT SHALL PREPARE SITE SPECIFIC DOCUMENTS FOR USE WITH THIS DOCUMENT.

HERMES F. NORERO  
LICENSE  
No. 73778  
STATE OF FLORIDA  
PROFESSIONAL ENGINEER

HERMES F. NORERO, P.E.  
BUILDING DROPS, INC.  
398 E. DANIA BEACH BLVD. # 338  
DANIA BEACH, FL 33004  
FBPE CERT. OF AUTHORIZATION No. 29578

FL #: **FL11218**

DATE: **08.14.08**

DWG. BY: <b>JK</b>	CHK. BY: <b>FLS</b>
--------------------	---------------------

SCALE: **NTS**

DWG. #: **MDI014**

SECTION: **3**

OF 11

z:\projects\mesker.mbm, llc\bc-23-0112 - fbc submittal - commercial steel doors revisions\dwgs\fl11218\mdi014.dwg 3/31/2023 8:52 AM



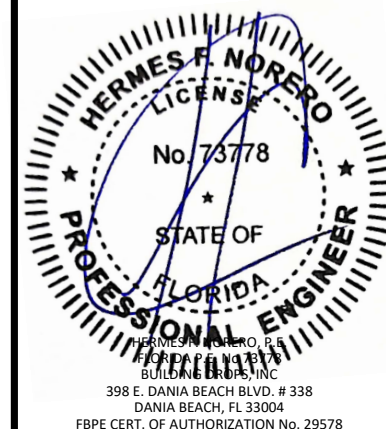
MESKER MBM, LLC  
 3340 STANDWOOD BLVD.  
 HUNTSVILLE, AL 35811  
 PH: (256) 851-6670

TITLE: "N" SERIES COMMERCIAL SINGLE  
 OPAQUE DOOR - INSWING  
 (HVHZ) (IMPACT)  
 HORIZONTAL CROSS SECTIONS

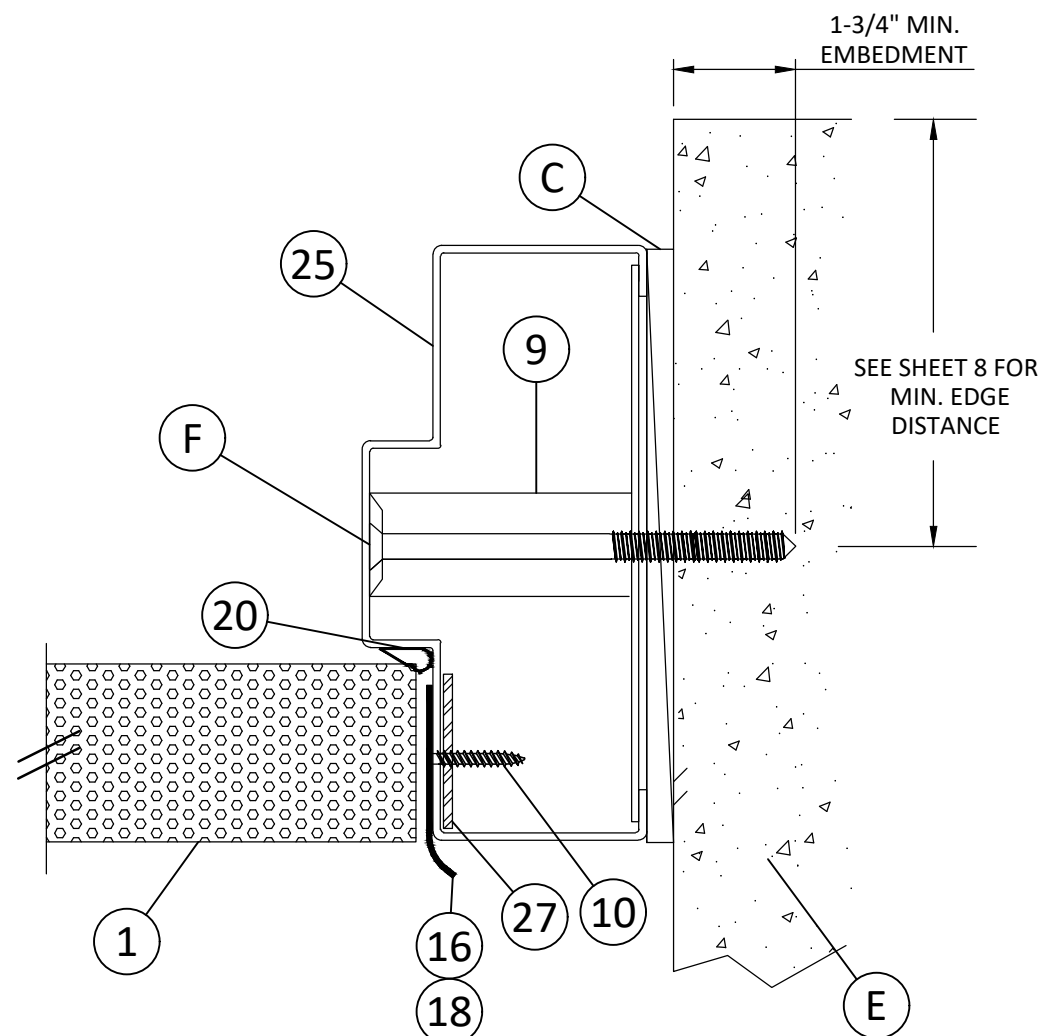
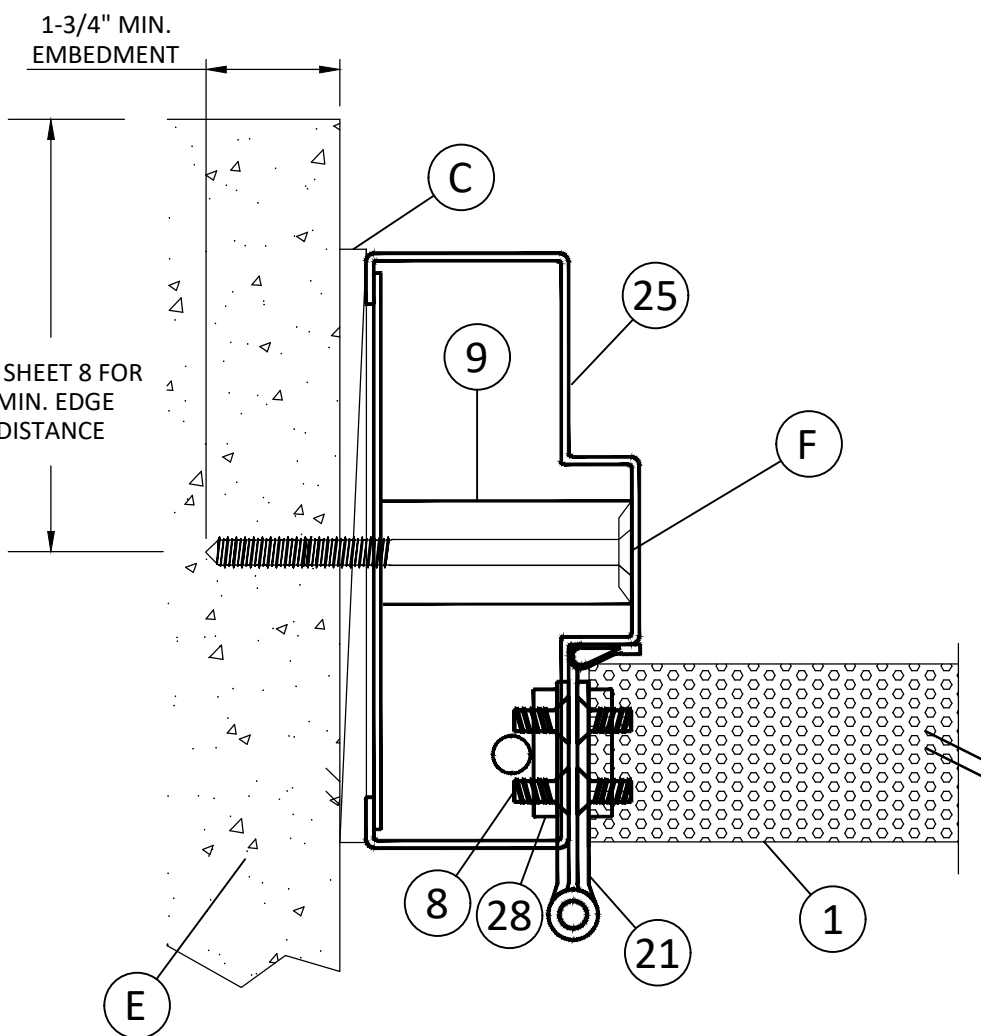
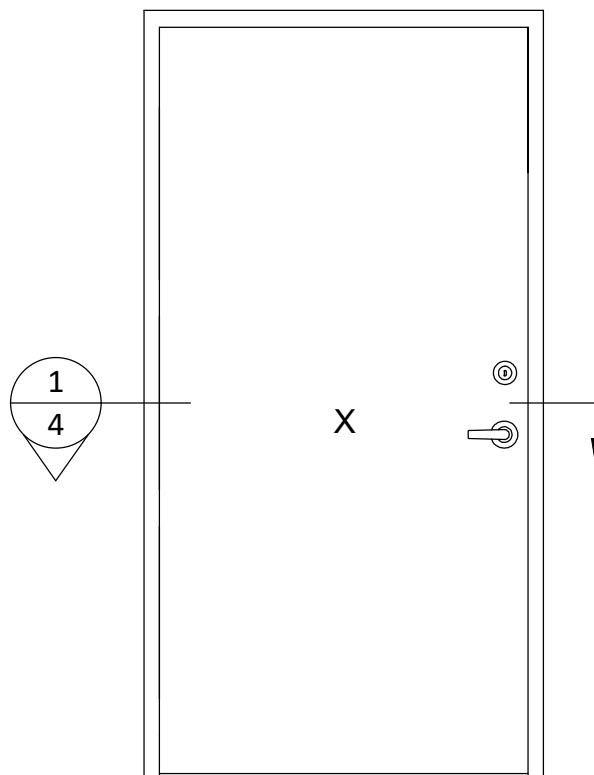
PREPARED BY:  
**BD**  
 BUILDING DROPS  
 BUILDING DROPS, INC.  
 398 E. DANIA BEACH BLVD., STE. 338  
 DANIA BEACH, FL 33004  
 PH: (954) 399-8478  
 FAX: (954) 744-4738  
 WEB: www.buildingdrops.com

REMARKS	BY	DATE
2023 NAME CHANGE	MG	03/23

THE INSTALLATION DETAILS DESCRIBED HEREIN ARE GENERIC AND MAY NOT REFLECT ACTUAL CONDITIONS FOR A SPECIFIC SITE. IF SITE CONDITIONS CAUSE INSTALLATION TO DEVIATE FROM THE REQUIREMENTS DETAILED HEREIN, A LICENSED ENGINEER OR ARCHITECT SHALL PREPARE SITE SPECIFIC DOCUMENTS FOR USE WITH THIS DOCUMENT.



FL #:	<b>FL11218</b>
DATE:	<b>08.14.08</b>
DWG. BY:	<b>JK</b>
CHK. BY:	<b>FLS</b>
SCALE:	<b>NTS</b>
DWG. #:	<b>MDI014</b>
SECTION:	<b>4</b>



**1**  
**4** HORIZONTAL CROSS SECTION

z:\projects\mesker.mbm, llc\bc-23-0112 - bc submittal - commercial steel doors revisions\dwg\fl11218\mdi014.dwg 3/31/2023 8:52 AM



**MESKER MBM, LLC**  
 3340 STANDWOOD BLVD.  
 HUNTSVILLE, AL 35811  
 PH: (256) 851-6670

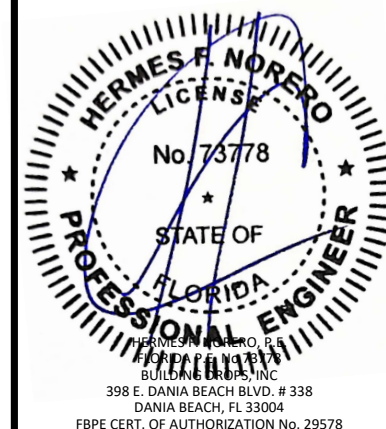
TITLE: "N" SERIES COMMERCIAL SINGLE  
 OPAQUE DOOR - INSWING  
 (HVHZ) (IMPACT)  
 HORIZONTAL CROSS SECTIONS

PREPARED BY:  
**BUILDING DROPS, INC.**  
 398 E. DANIA BEACH BLVD., STE. 338  
 DANIA BEACH, FL 33004  
 PH: (954)399-8478  
 FAX: (954)744-4738  
 WEB: www.buildingdrops.com

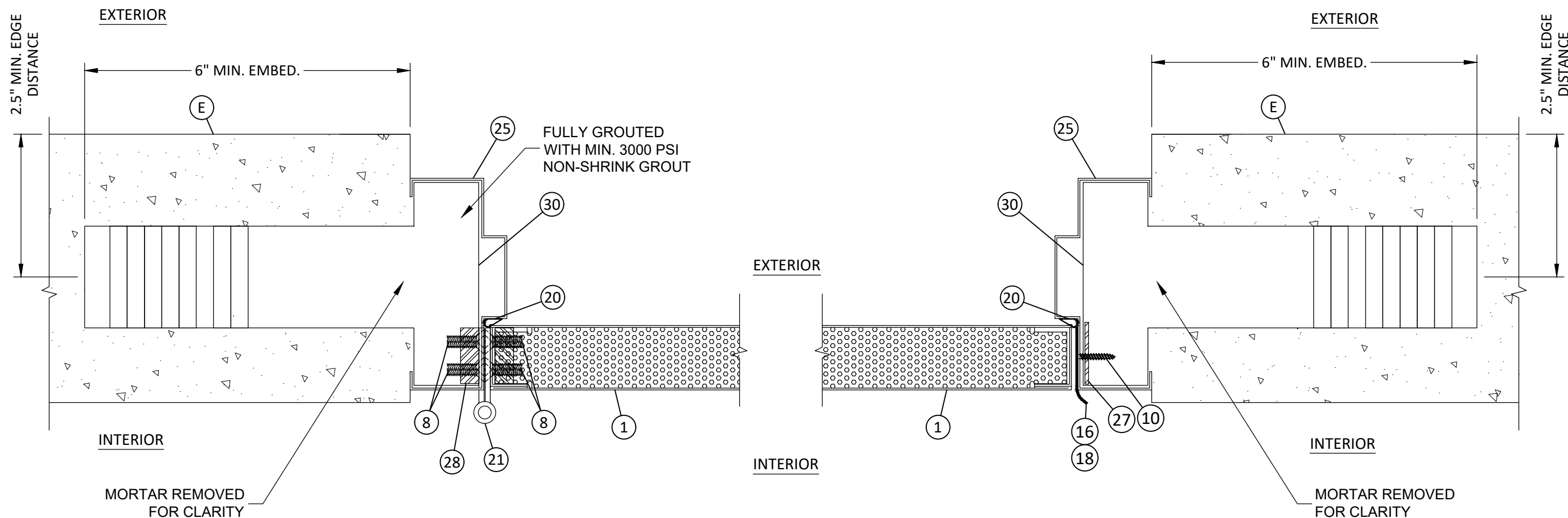
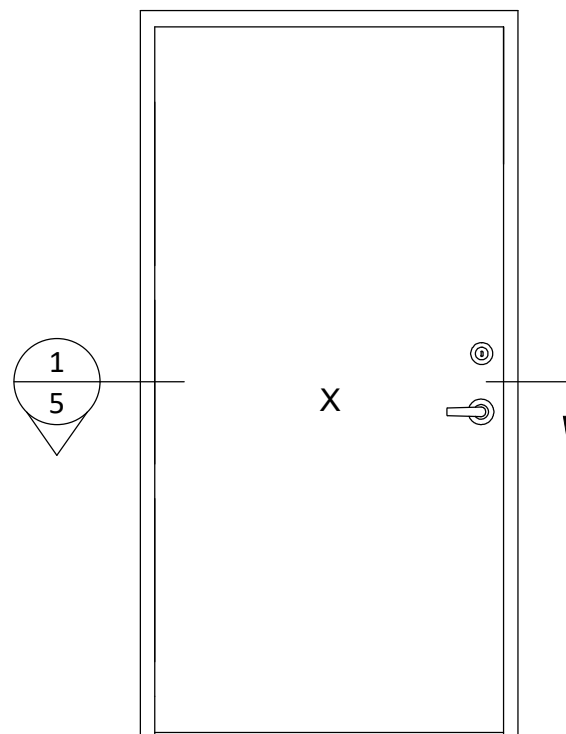


REMARKS	BY	DATE
2023 NAME CHANGE	MG	03/23

THE INSTALLATION DETAILS DESCRIBED HEREIN ARE GENERIC AND MAY NOT REFLECT ACTUAL CONDITIONS FOR A SPECIFIC SITE. IF SITE CONDITIONS CAUSE INSTALLATION TO DEVIATE FROM THE REQUIREMENTS DETAILED HEREIN, A LICENSED ENGINEER OR ARCHITECT SHALL PREPARE SITE SPECIFIC DOCUMENTS FOR USE WITH THIS DOCUMENT.



FL #:	<b>FL11218</b>
DATE:	<b>08.14.08</b>
DWG. BY:	<b>JK</b>
CHK. BY:	<b>FLS</b>
SCALE:	<b>NTS</b>
DWG. #:	<b>MDI014</b>
SECTION:	<b>5</b>



**1**  
**5**  
**HORIZONTAL CROSS SECTION**

z:\projects\mesker.mbm, llc\bc-23-0112 - fbc submittal - commercial steel doors revisions\dwgs\fl11218\mdi014.dwg 3/31/2023 8:52 AM



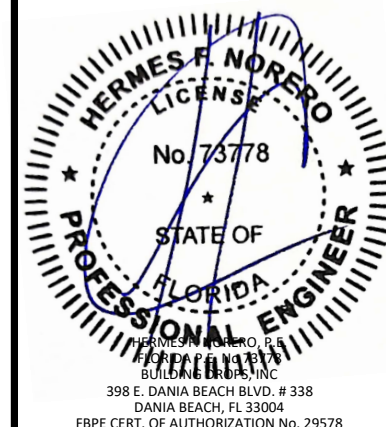
MESKER MBM, LLC  
 3340 STANDWOOD BLVD.  
 HUNTSVILLE, AL 35811  
 PH: (256) 851-6670

TITLE: "N" SERIES COMMERCIAL SINGLE  
 OPAQUE DOOR - INSWING  
 (HVHZ) (IMPACT)  
 HORIZONTAL CROSS SECTIONS

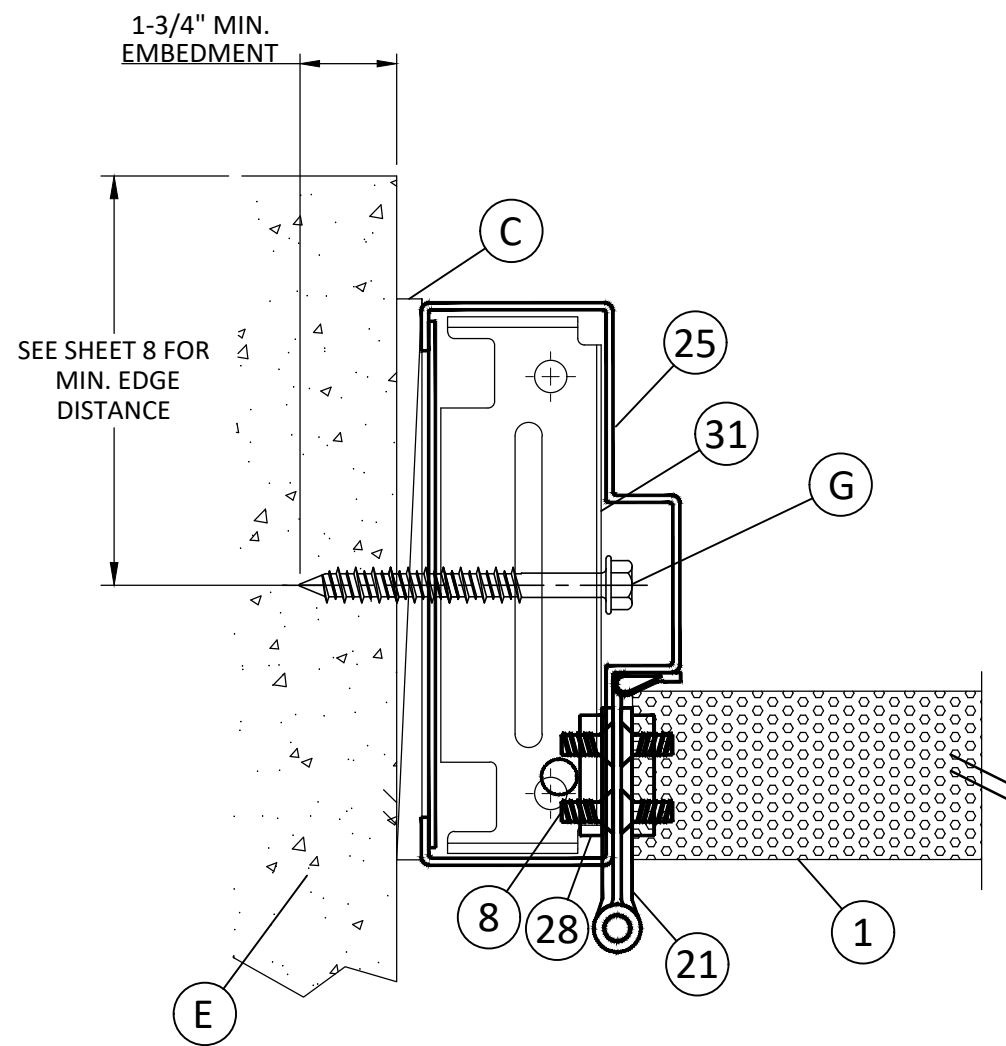
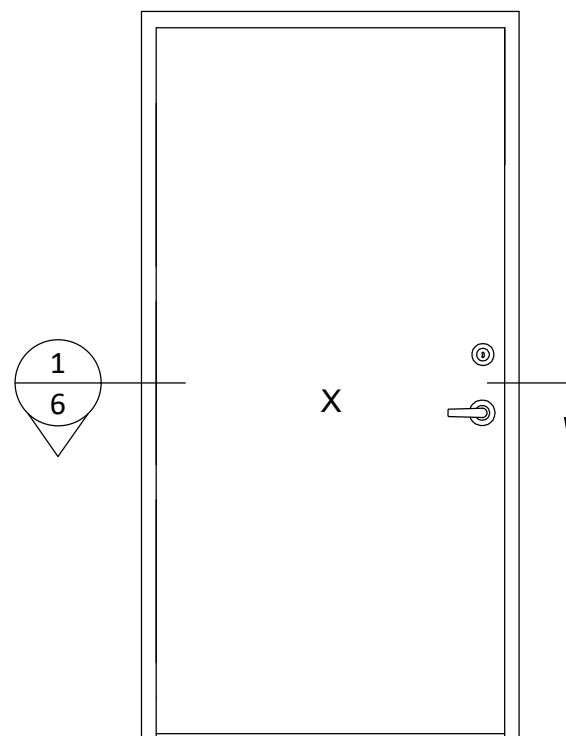
PREPARED BY:  
**BD**  
 BUILDING DROPS  
 BUILDING DROPS, INC.  
 398 E. DANIA BEACH BLVD., STE. 338  
 DANIA BEACH, FL 33004  
 PH: (954)399-8478  
 FAX: (954)744-4738  
 WEB: www.buildingdrops.com

REMARKS	BY	DATE
2023 NAME CHANGE	MG	03/23

THE INSTALLATION DETAILS DESCRIBED HEREIN ARE GENERIC AND MAY NOT REFLECT ACTUAL CONDITIONS FOR A SPECIFIC SITE. IF SITE CONDITIONS CAUSE INSTALLATION TO DEVIATE FROM THE REQUIREMENTS DETAILED HEREIN, A LICENSED ENGINEER OR ARCHITECT SHALL PREPARE SITE SPECIFIC DOCUMENTS FOR USE WITH THIS DOCUMENT.

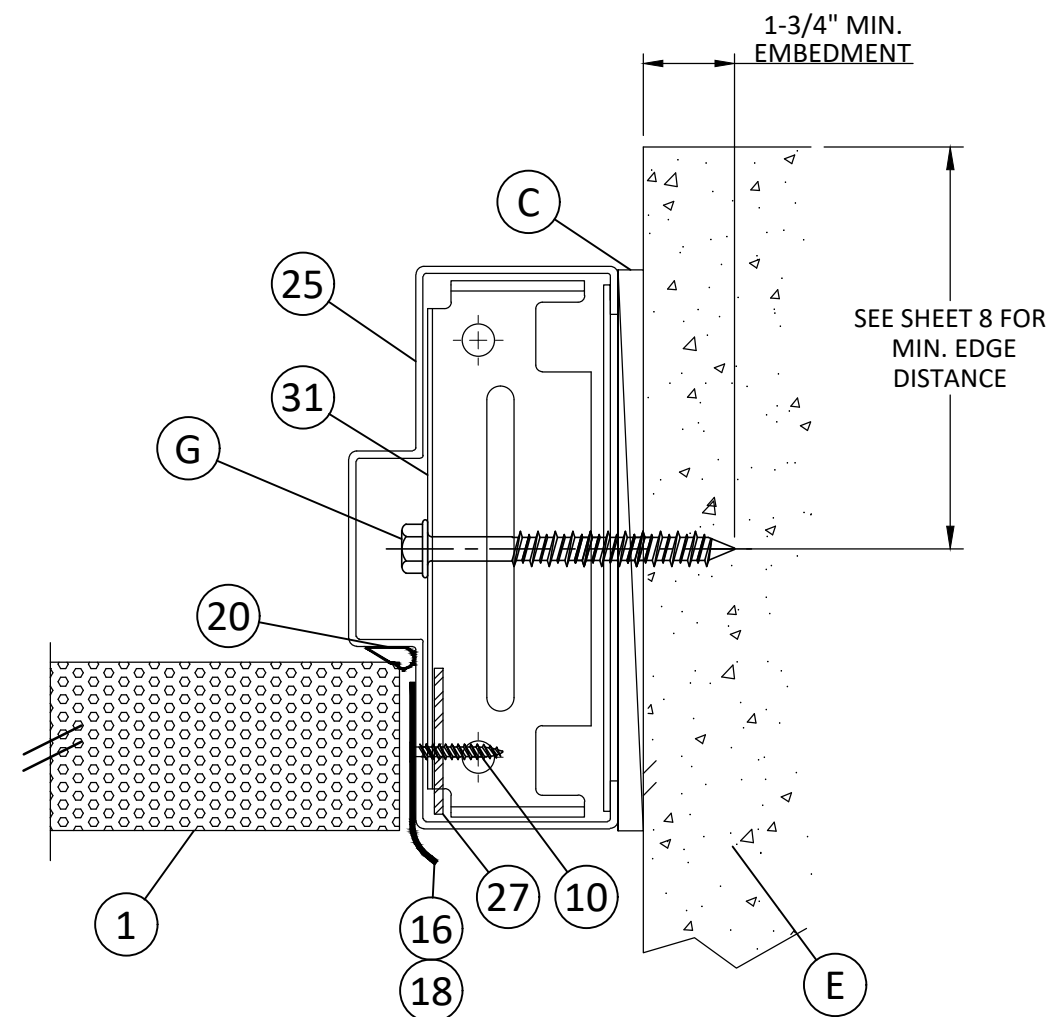


FL #:	<b>FL11218</b>
DATE:	<b>08.14.08</b>
DWG. BY:	<b>JK</b>
CHK. BY:	<b>FLS</b>
SCALE:	<b>NTS</b>
DWG. #:	<b>MDI014</b>
SECTION:	<b>6</b>



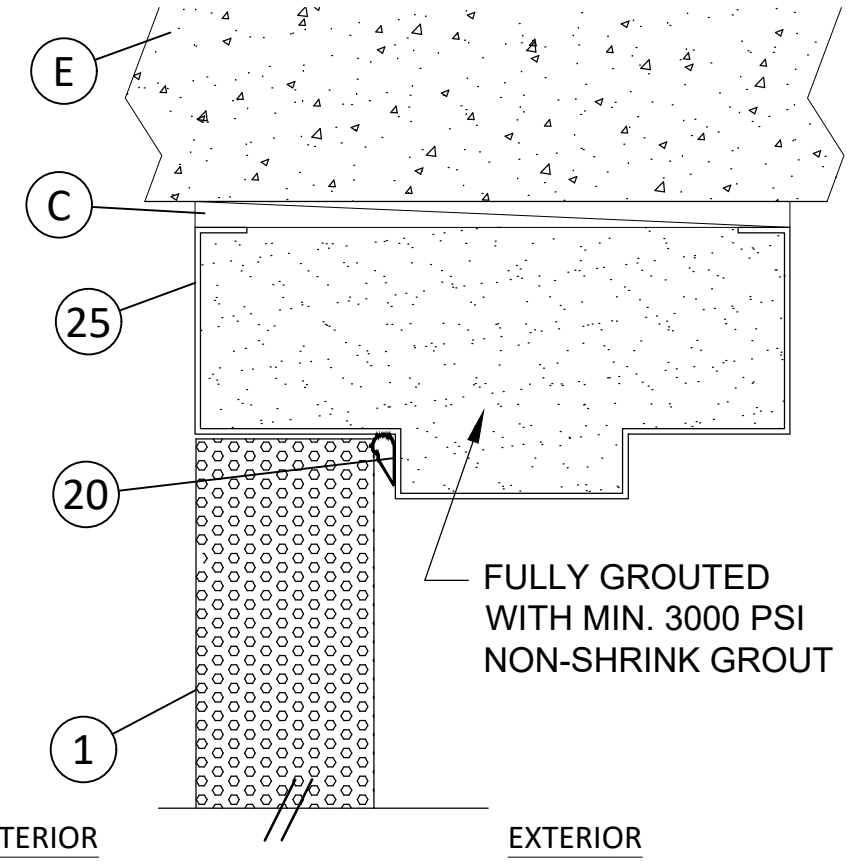
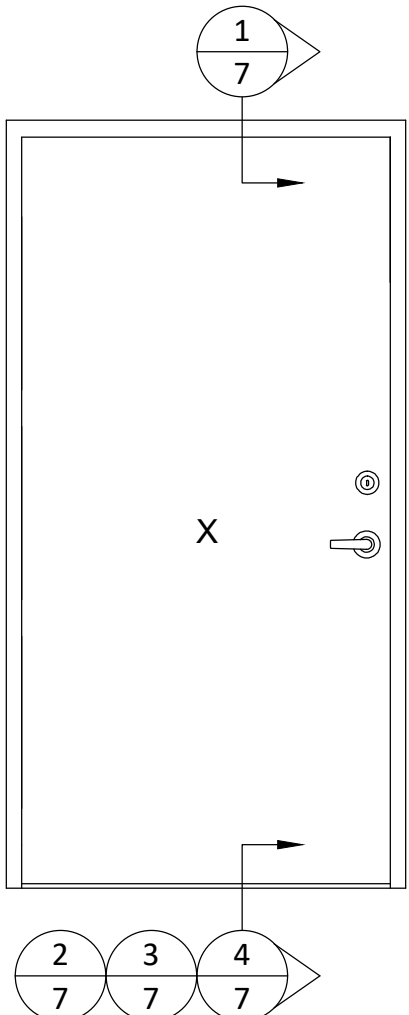
EXTERIOR

INTERIOR

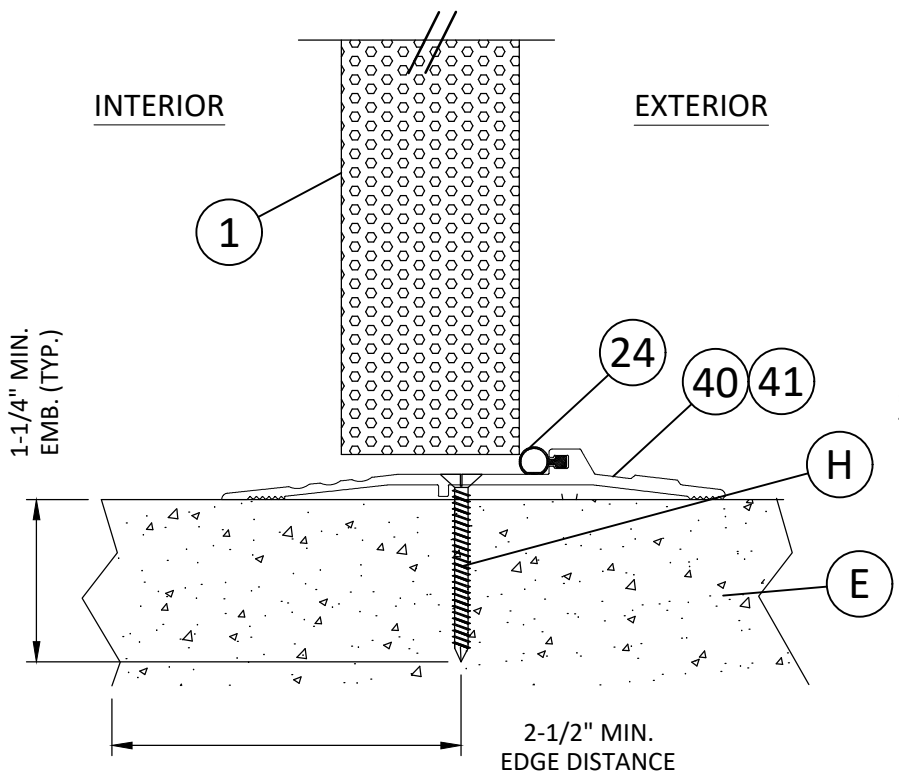


**1**  
**6** HORIZONTAL CROSS SECTION

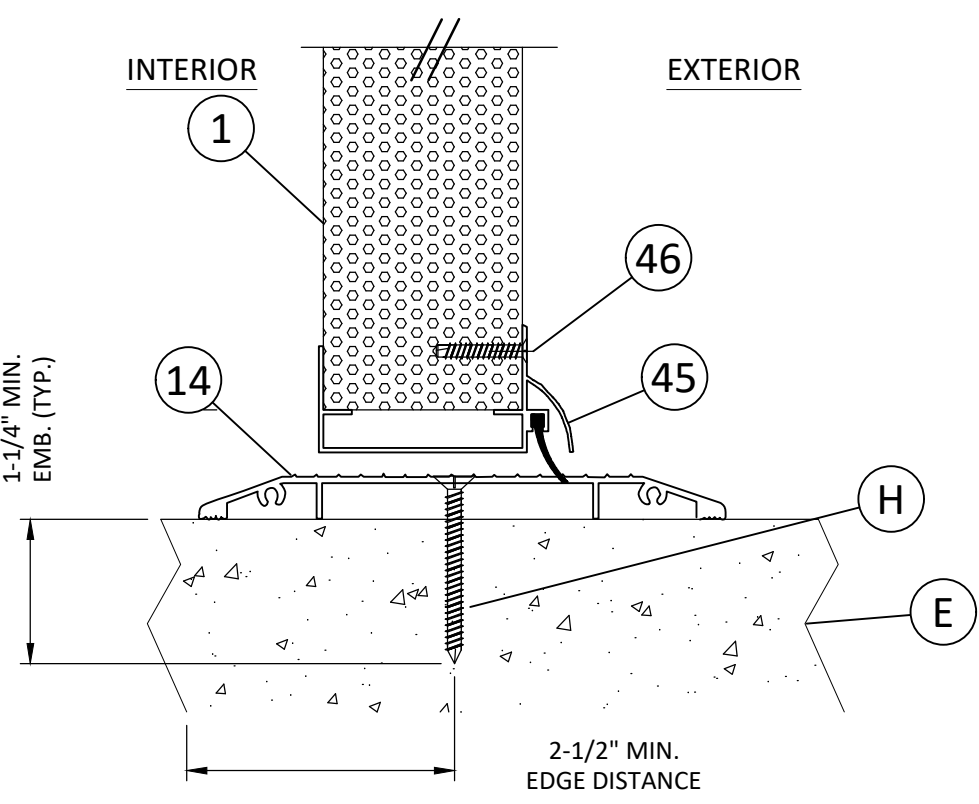
3/31/2023 8:51 AM  
 z:\projects\mesker mbm, llc\bc-23-0112 - fbc submittal - commercial steel doors\revisions\dwg\fl11218\mdi014.dwg



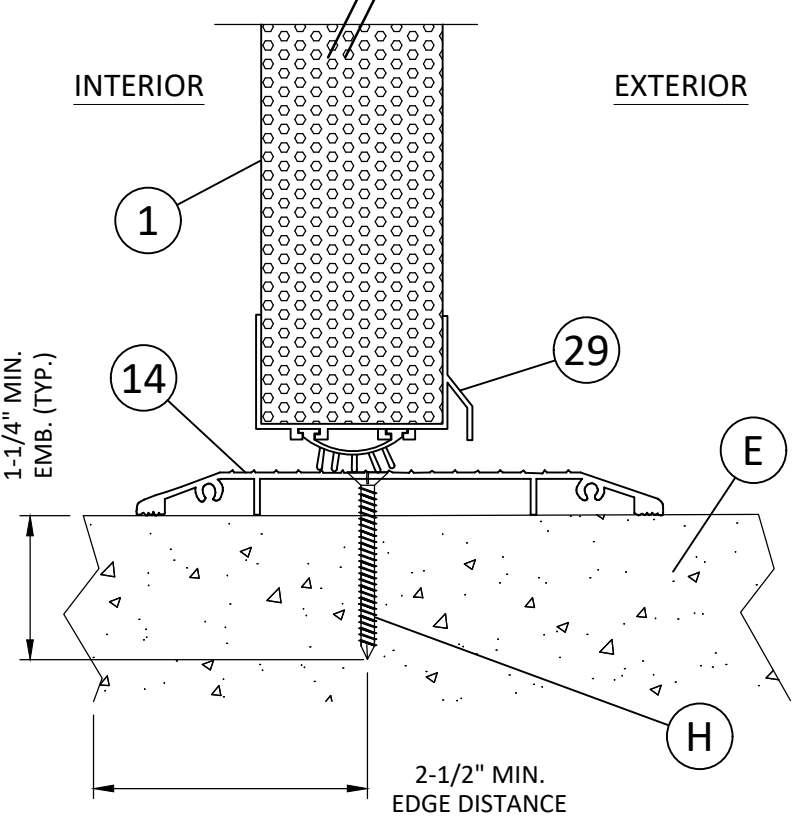
**1**  
7 **VERTICAL CROSS SECTION**  
W/ 2" HEAD



**2**  
7 **VERTICAL CROSS SECTION**  
INSWING CONFIGURATION  
SEE GENERAL NOTES, SHEET 1  
FOR "HVHZ" WATER INFILTRATION  
REQUIREMENTS



**3**  
7 **VERTICAL CROSS SECTION**  
INSWING CONFIGURATION  
SEE GENERAL NOTES, SHEET 1  
FOR "HVHZ" WATER INFILTRATION  
REQUIREMENTS



**4**  
7 **VERTICAL CROSS SECTION**  
INSWING CONFIGURATION  
SEE GENERAL NOTES, SHEET 1  
FOR "HVHZ" WATER INFILTRATION  
REQUIREMENTS



MESKER MBM, LLC  
 3340 STANDWOOD BLVD.  
 HUNTSVILLE, AL 35811  
 PH: (256) 851-6670

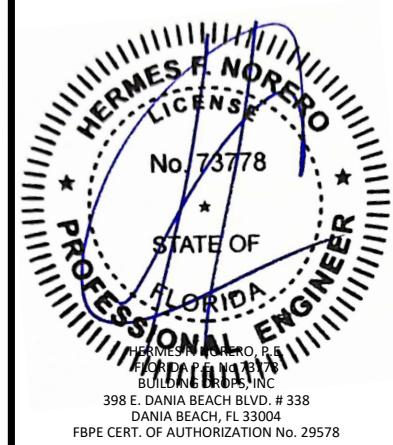
TITLE: "N" SERIES COMMERCIAL SINGLE  
 OPAQUE DOOR - INSWING  
 (HVHZ) (IMPACT)  
 VERTICAL CROSS SECTIONS

PREPARED BY:  
**BUILDING DROPS, INC.**  
 398 E. DANIA BEACH BLVD., STE. 338  
 DANIA BEACH, FL 33004  
 PH: (954) 399-8478  
 FAX: (954) 744-4738  
 WEB: www.buildingdrops.com



REMARKS	BY	DATE
2023 NAME CHANGE	MG	03/23

THE INSTALLATION DETAILS DESCRIBED HEREIN ARE GENERIC AND MAY NOT REFLECT ACTUAL CONDITIONS FOR A SPECIFIC SITE. IF SITE CONDITIONS CAUSE INSTALLATION TO DEVIATE FROM THE REQUIREMENTS DETAILED HEREIN, A LICENSED ENGINEER OR ARCHITECT SHALL PREPARE SITE SPECIFIC DOCUMENTS FOR USE WITH THIS DOCUMENT.



FL #:  
**FL11218**

DATE: **08.14.08**

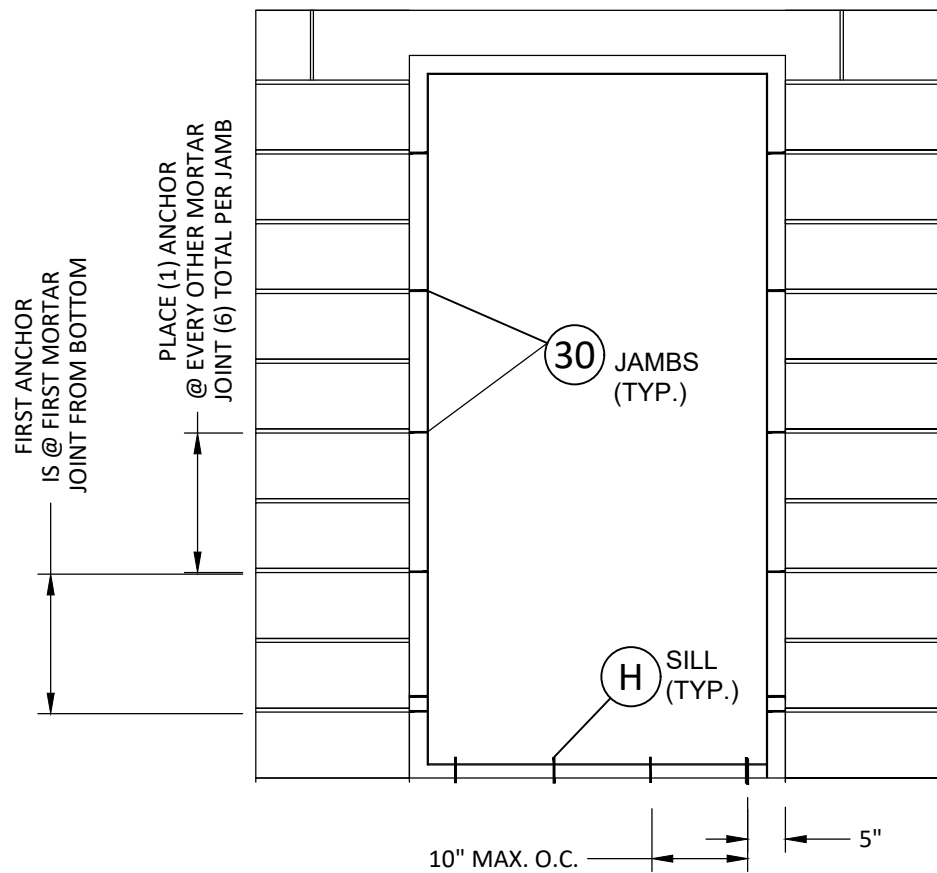
DWG. BY: **JK**      CHK. BY: **FLS**

SCALE: **NTS**

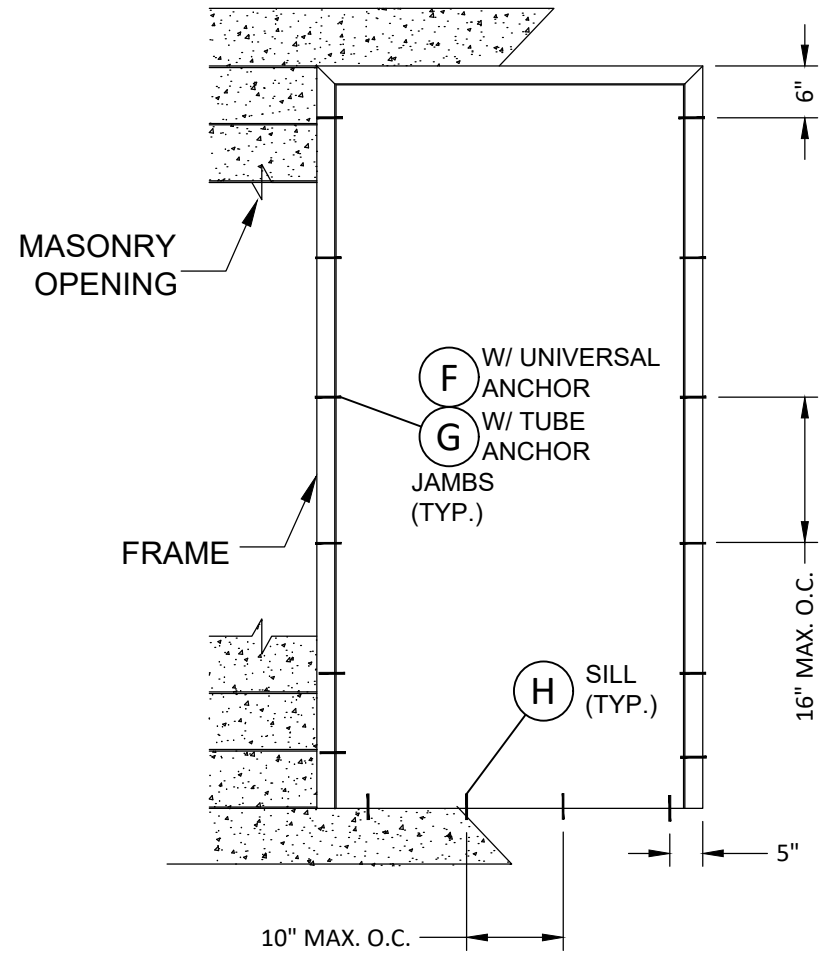
DWG. #: **MDI014**

SECTION:  
**7**  
 OF 11

3/31/2023 8:52 AM  
z:\projects\mesker.mbm, llc\bc-23-0112 - fbc submittal - commercial steel doors revisions\dwg\11218\mdi014.dwg



**FRAME ANCHORING**  
T-STRAP & WIRE ANCHOR



**FRAME ANCHORING**  
CONCRETE/MASONRY

**CONCRETE ANCHOR NOTES:**

1. CONCRETE ANCHOR LOCATIONS AT THE CORNERS MAY BE ADJUSTED TO MAINTAIN THE MIN. EDGE DISTANCE TO MORTAR JOINTS.
2. CONCRETE ANCHOR LOCATIONS NOTED AS "MAX. O.C." MUST BE ADJUSTED TO MAINTAIN THE MIN. EDGE DISTANCE TO MORTAR JOINTS. ADDITIONAL CONCRETE ANCHORS MAY BE REQUIRED TO ENSURE THE "MAX. O.C." DIMENSION ARE NOT EXCEEDED.
3. CONCRETE ANCHOR TABLE:

ANCHOR TYPE	ANCHOR SIZE	MIN. EMBEDMENT	MIN. CLEARANCE TO MASONRY EDGE	MIN. CLEARANCE TO ADJACENT ANCHOR	LOCATION
ITW TAPCON	1/4"	1-1/4"	2"	4"	THRESHOLD
ELCO ULTRACON	1/4"	1-1/4"	1"	4"	
ITW TAPCONXL	5/16"	1-3/4"	4"	3-3/4"	FRAME
ELCO ULTRACON	5/16"	1-3/4"	2-1/2"	5"	

4. EMBEDMENT MAY BE THROUGH 1-1/4" FACE SHELL OF HOLLOW BLOCK.



MESKER MBM, LLC  
3340 STANDWOOD BLVD.  
HUNTSVILLE, AL 35811  
PH: (256) 851-6670

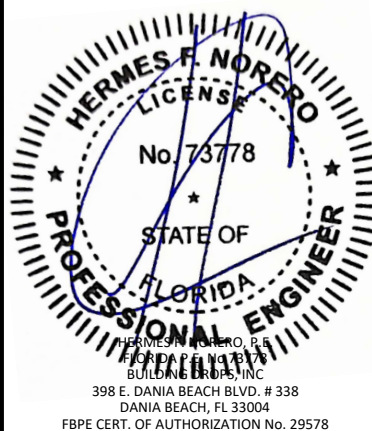
TITLE: "N" SERIES COMMERCIAL SINGLE OPAQUE DOOR - INSWING (HVHZ) (IMPACT) FRAME ANCHORING

PREPARED BY: BUILDING DROPS, INC.  
398 E. DANIA BEACH BLVD., STE. 338  
DANIA BEACH, FL 33004  
PH: (954)399-8478  
FAX: (954)744-4738  
WEB: www.buildingdrops.com



REMARKS	BY	DATE
2023 NAME CHANGE	MG	03/23

THE INSTALLATION DETAILS DESCRIBED HEREIN ARE GENERIC AND MAY NOT REFLECT ACTUAL CONDITIONS FOR A SPECIFIC SITE. IF SITE CONDITIONS CAUSE INSTALLATION TO DEVIATE FROM THE REQUIREMENTS DETAILED HEREIN, A LICENSED ENGINEER OR ARCHITECT SHALL PREPARE SITE SPECIFIC DOCUMENTS FOR USE WITH THIS DOCUMENT.



FL #: **FL11218**

DATE: **08.14.08**

DWG. BY: **JK**      CHK. BY: **FLS**

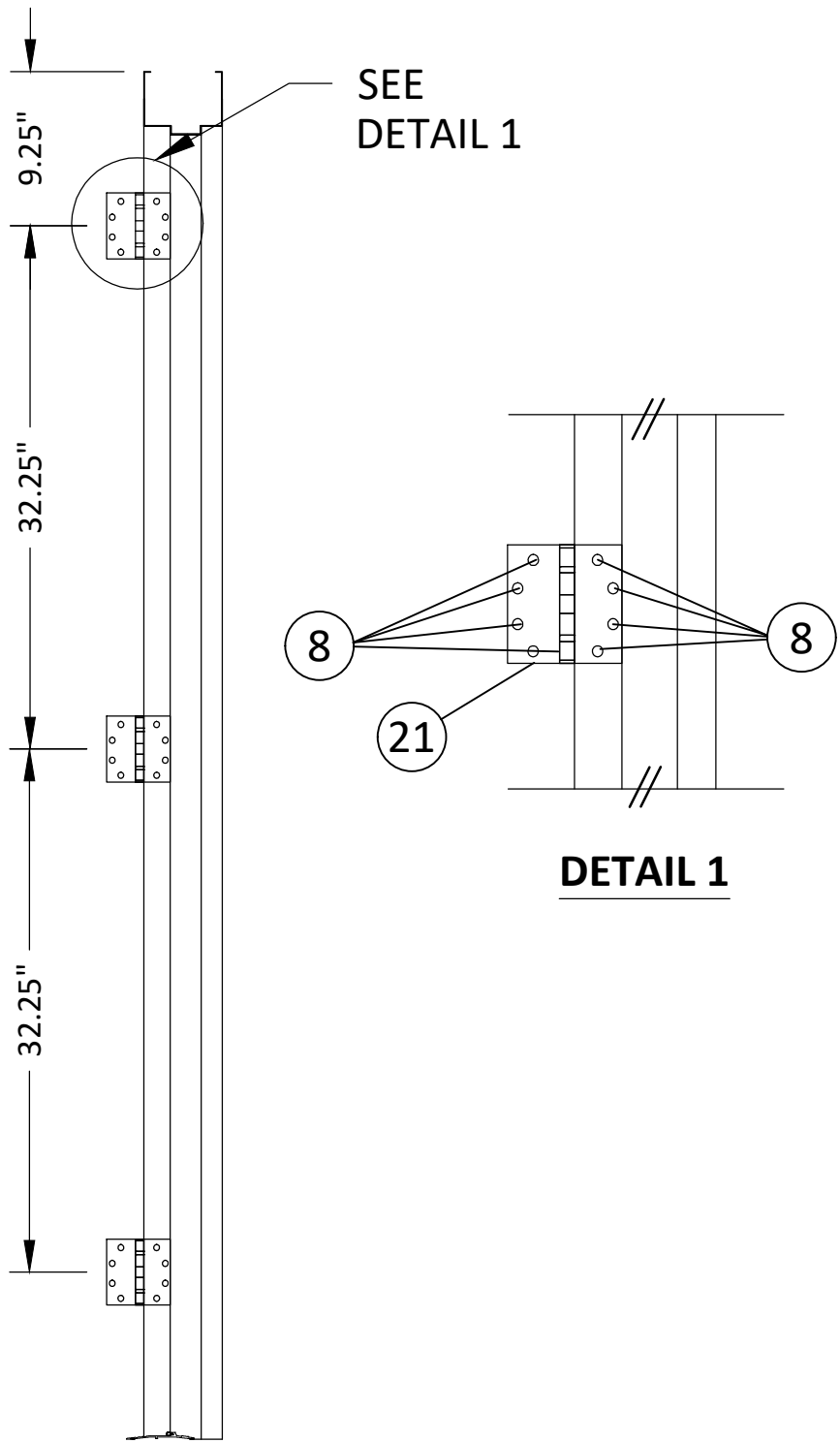
SCALE: **NTS**

DWG. #: **MDI014**

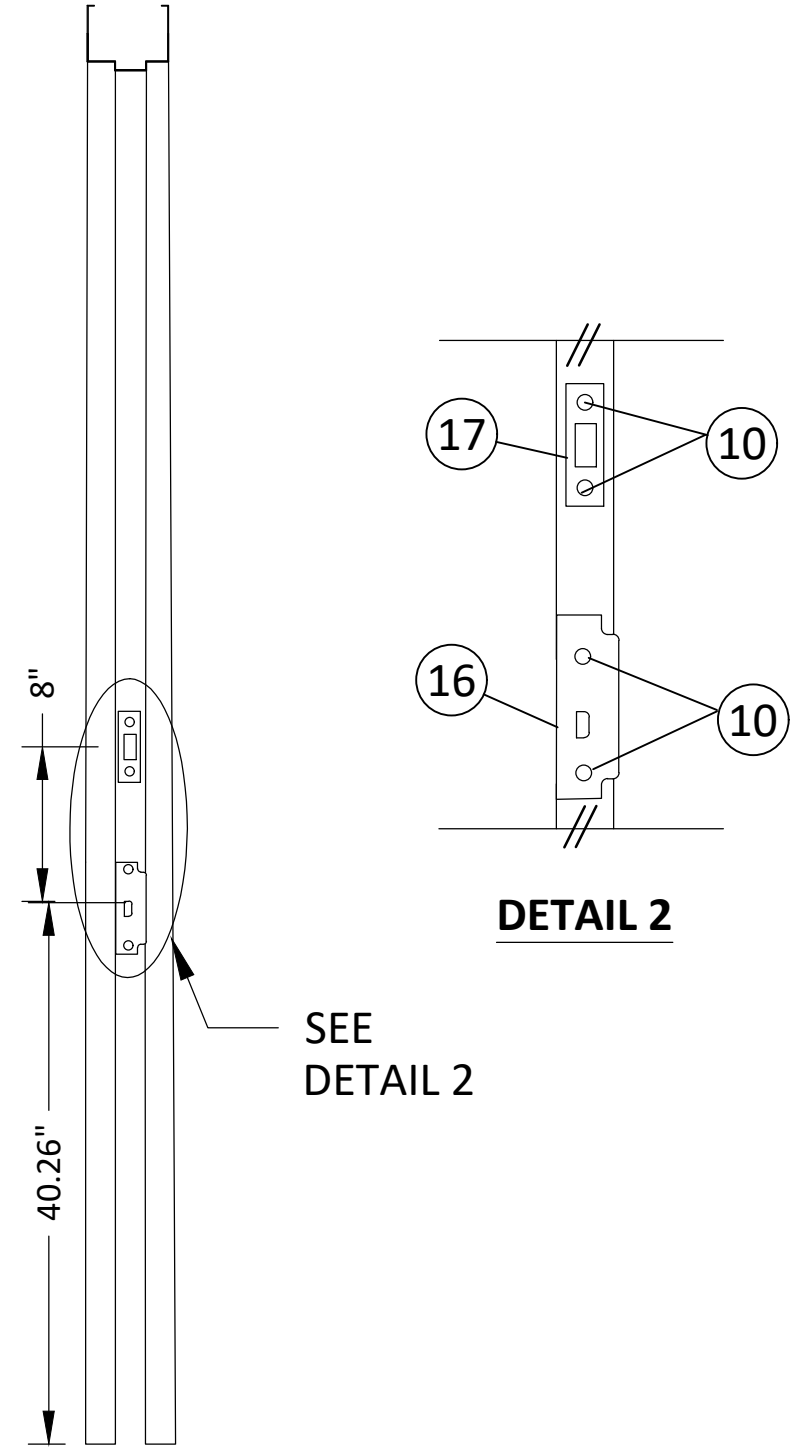
SECTION: **8**  
OF 11



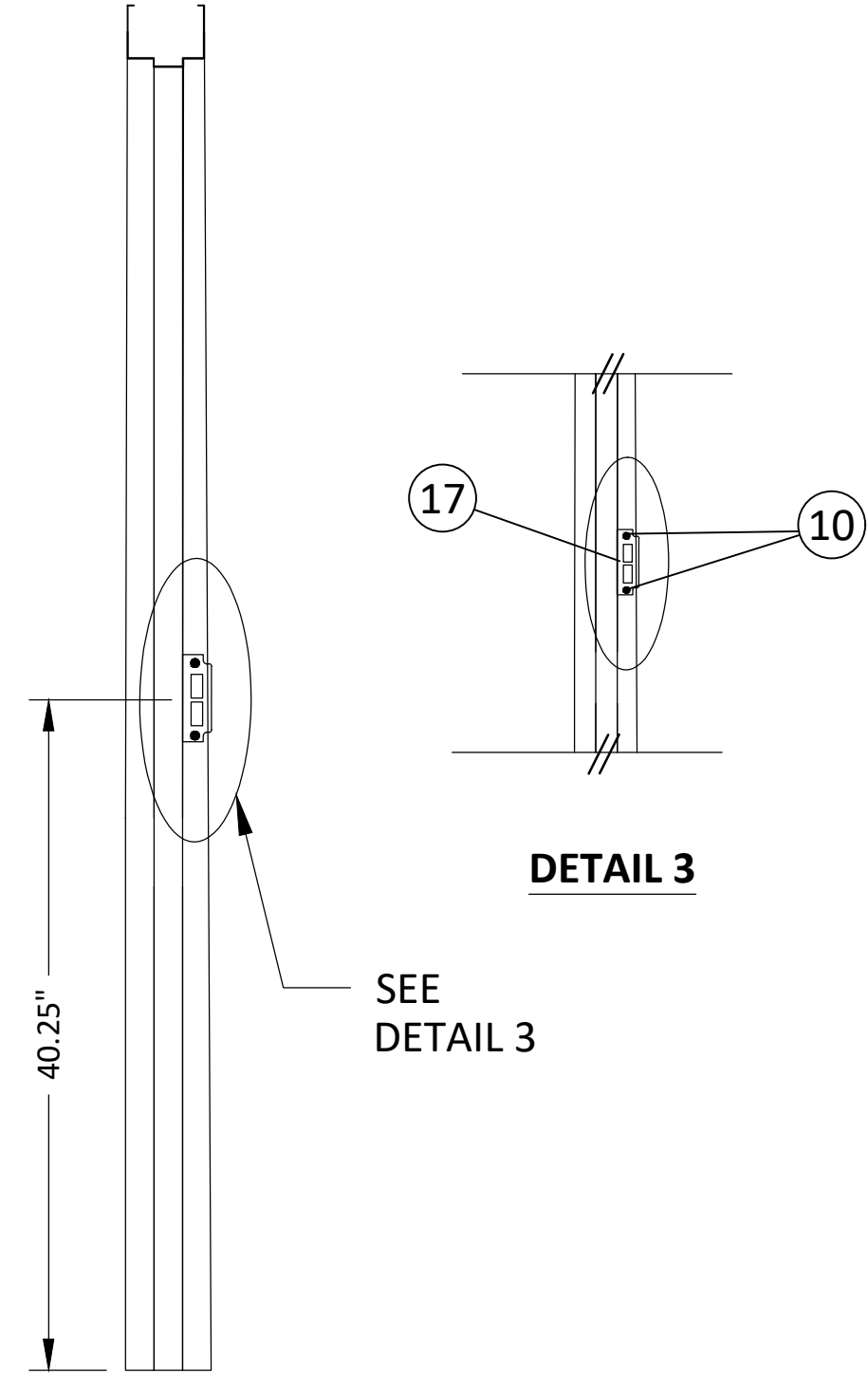
z:\projects\mesker.mbm, llc\bc-23-0112 - fbc submittal - commercial steel doors revisions\dwg\11218\mdi014.dwg 3/31/2023 8:52 AM



**HINGE JAMB**



**STRIKE JAMB  
ANSI STRIKE & DEAD BOLT STRIKE**



**STRIKE JAMB**

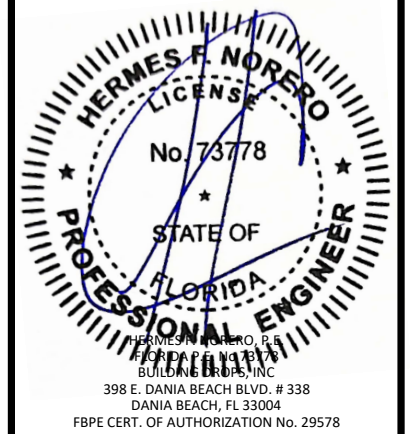


**MESKER MBM, LLC**  
3340 STANDWOOD BLVD.  
HUNTSVILLE, AL 35811  
PH: (256) 851-6670

TITLE: "N" SERIES COMMERCIAL SINGLE OPAQUE DOOR - INSWING (HVHZ) (IMPACT) ANCHORING DETAILS  
PREPARED BY: BUILDING DROPS, INC.  
398 E. DANIA BEACH BLVD., STE. 338  
DANIA BEACH, FL 33004  
PH: (954)399-8478  
FAX: (954)744-4738  
WEB: www.buildingdrops.com

REMARKS	BY	DATE
2023 NAME CHANGE	MG	03/23

THE INSTALLATION DETAILS DESCRIBED HEREIN ARE GENERIC AND MAY NOT REFLECT ACTUAL CONDITIONS FOR A SPECIFIC SITE. IF SITE CONDITIONS CAUSE INSTALLATION TO DEVIATE FROM THE REQUIREMENTS DETAILED HEREIN, A LICENSED ENGINEER OR ARCHITECT SHALL PREPARE SITE SPECIFIC DOCUMENTS FOR USE WITH THIS DOCUMENT.



FL #: **FL11218**

DATE: **08.14.08**

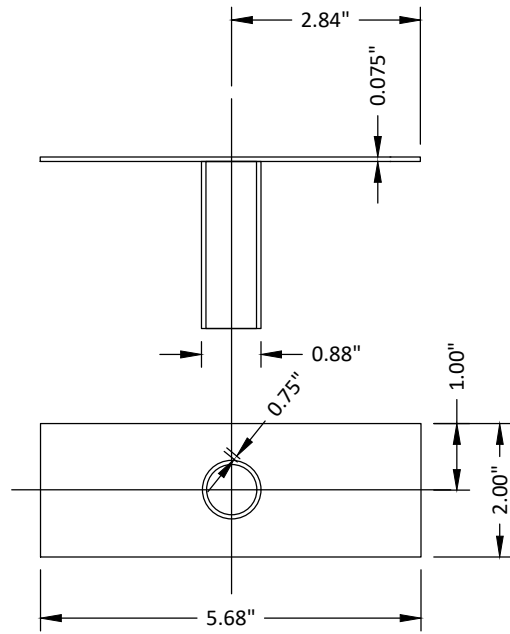
DWG. BY: **JK**      CHK. BY: **FLS**

SCALE: **NTS**

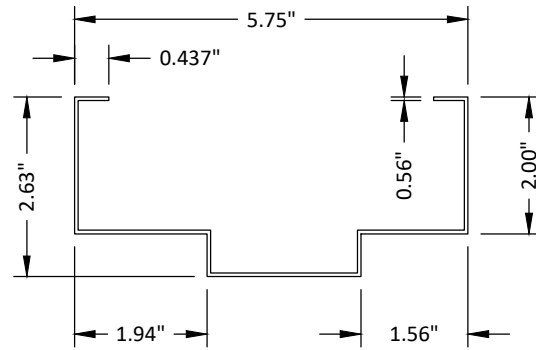
DWG. #: **MDI014**

SECTION: **9**  
OF 11

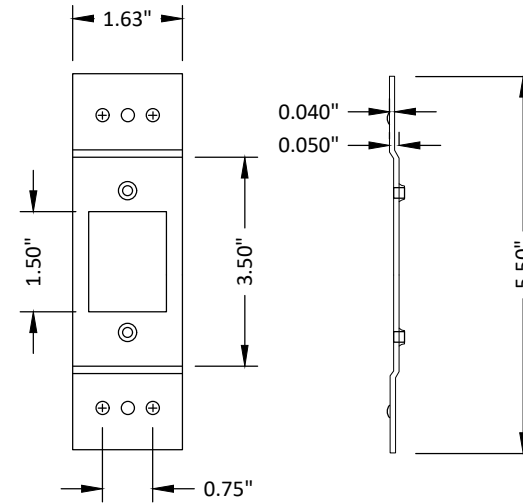
3/31/2023 8:52 AM  
z:\projects\mesker.mbm, llc\bc-23-0112 - fbc submittal - commercial steel doors revisions\dwg\111218\mdi014.dwg



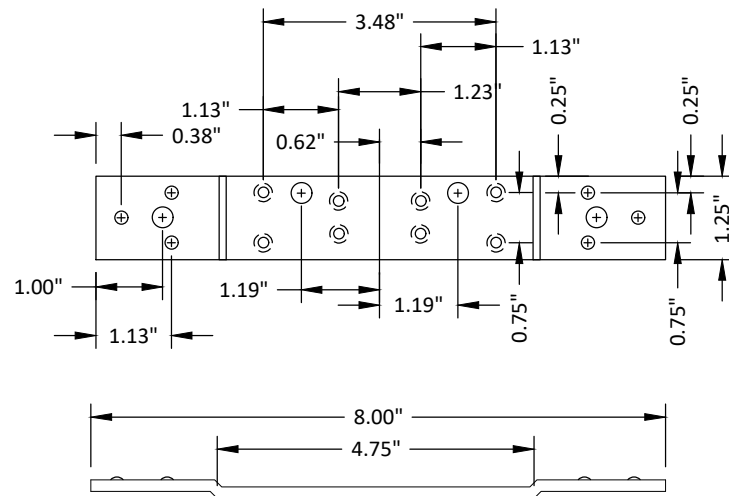
**9** TUBE ANCHOR



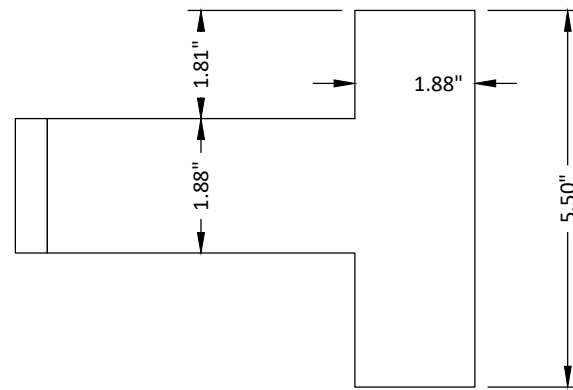
**25** FRAME



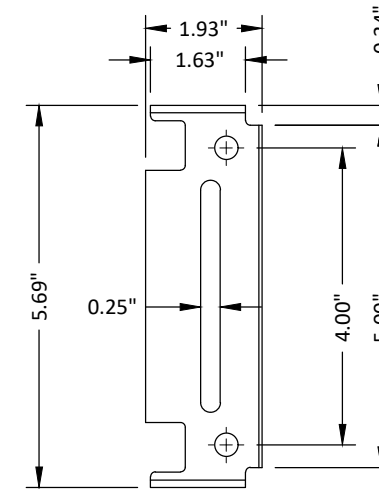
**27** LATCH STRIKE REINFORCEMENT



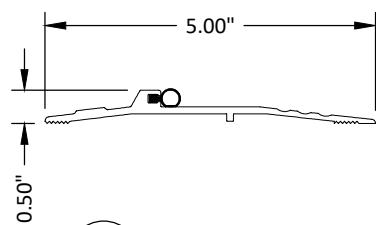
**28** FRAME HINGE REINFORCEMENT



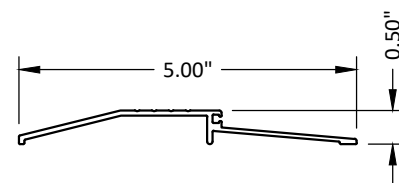
**30** MASONRY "TEE" ANCHOR



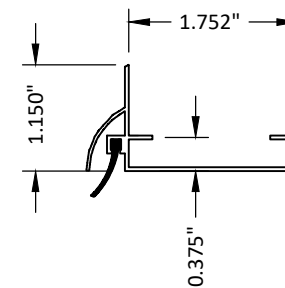
**31** UNIVERSAL WALL ANCHOR



**40** THRESHOLD  
NGP #896V



**41** THRESHOLD  
NGP #950V



**45** DOOR SWEEP



MESKER MBM, LLC  
3340 STANDWOOD BLVD.  
HUNTSVILLE, AL 35811  
PH: (256) 851-6670

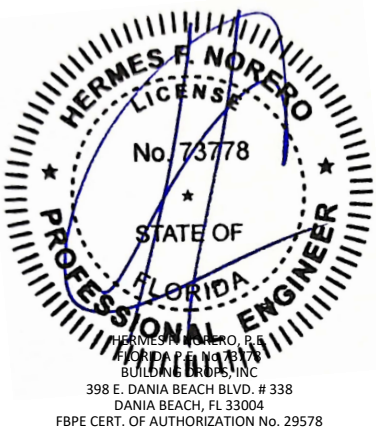
TITLE: "N" SERIES COMMERCIAL SINGLE OPAQUE DOOR - INSWING (HVHZ) (IMPACT) COMPONENTS

PREPARED BY: BUILDING DROPS, INC.  
398 E. DANIA BEACH BLVD., STE. 338  
DANIA BEACH, FL 33004  
PH: (954)399-8478  
FAX: (954)744-4738  
WEB: www.buildingdrops.com



REMARKS	BY	DATE
2023 NAME CHANGE	MG	03/23

THE INSTALLATION DETAILS DESCRIBED HEREIN ARE GENERIC AND MAY NOT REFLECT ACTUAL CONDITIONS FOR A SPECIFIC SITE. IF SITE CONDITIONS CAUSE INSTALLATION TO DEVIATE FROM THE REQUIREMENTS DETAILED HEREIN, A LICENSED ENGINEER OR ARCHITECT SHALL PREPARE SITE SPECIFIC DOCUMENTS FOR USE WITH THIS DOCUMENT.



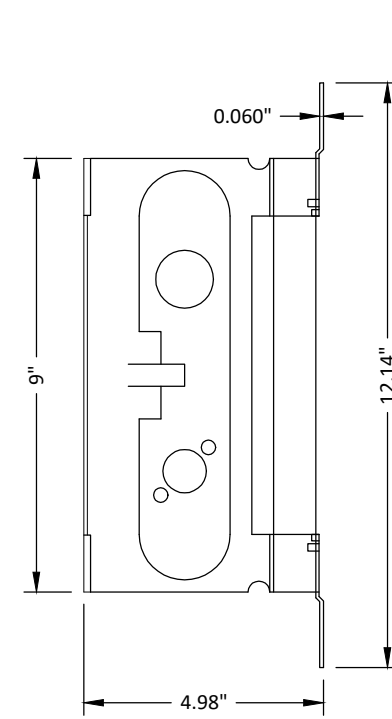
FL #:	<b>FL11218</b>
DATE:	<b>08.14.08</b>
DWG. BY:	<b>JK</b>
CHK. BY:	<b>FLS</b>
SCALE:	<b>NTS</b>
DWG. #:	<b>MDI014</b>

SECTION:  
**10**  
OF 11

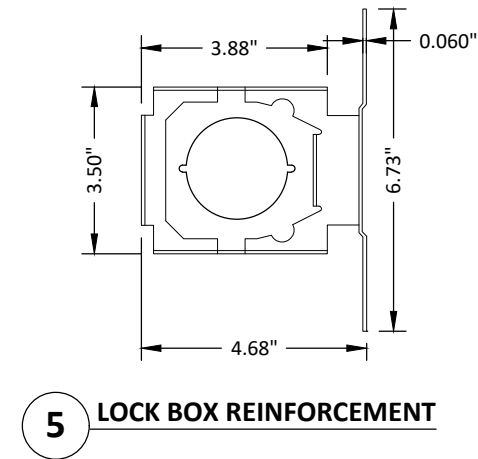
3/31/2023 8:52 AM  
z:\projects\mesker.mbm, llc\bc-23-0112 - fbc submittal - commercial steel doors revisions\dwg\11218\mdi014.dwg

## BILL OF MATERIALS

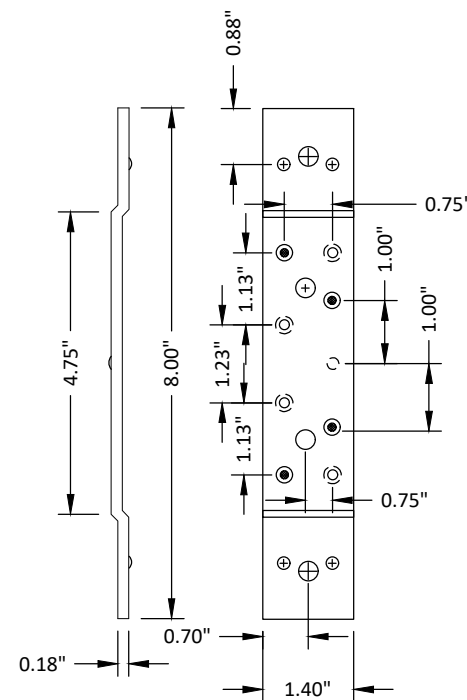
ITEM #	DESCRIPTION	MATERIAL
C	1/4" MAX. SHIM SPACE	-
E	MASONRY - 3000 PSI MIN. CONCRETE CONFORMING TO ACI 301 OR HOLLOW BLOCK CONFORMING TO ASTM C90	CONCRETE
F	5/16" X 5" PFH ITW OR ELCO CONCRETE SCREW	STEEL
G	5/16" X 4" HWH ITW OR ELCO CONCRETE SCREW	STEEL
H	1/4" X 1-3/4" ITW OR ELCO PFH CONCRETE SCREW	STEEL
1	"N" OPAQUE STEEL DOOR PANEL	-
2	DOOR SKIN - (0.042" THK. STEEL, Fy=40,3000 PSI MIN.)	STEEL
3	FOAM 1.0 PCF MIN. DENSITY	POLYSTYRENE
4	DOOR TOP & BOTTOM CLOSER	STEEL
5	LOCK BOX REINFORCEMENT	STEEL
6	CLOSER REINFORCEMENT	STEEL
7	MORTISE BOX REINFORCEMENT	STEEL
8	#12-24 X 1/2" SELF TAPPER	STEEL
9	TUBE ANCHOR (PF-10)	STEEL
10	#12-24 X 1" COMBINATION MACHINE / WOOD SCREW	STEEL
14	COLUMBIA ADA THRESHOLD #6510	ALUMINIUM
16	ANSI LATCH STRIKE	STEEL
17	DEADBOLT STRIKE	STEEL
18	ANSI MORTISE STRIKE	STEEL
20	WEATHERSTRIP (PEMKO S-88 OR PS-V)	NEOPRENE
21	4-1/2" X 4-1/2" X 0.125" TEMPLATE HINGE	STEEL
22	STANDARD (LONG) DOOR HINGE TOP HINGE REINFORCEMENT	STEEL
23	STANDARD (SHORT) DOOR HINGE MIDDLE BOTTOM HINGE REINF.	STEEL
24	WEATHERSTRIP (THRESHOLD)	NEOPRENE
25	FRAME (2") - 5-3/4" MIN. (0.056" THK) BY MESKER	STEEL
27	LATCH STRIKE REINFORCEMENT	STEEL
28	FRAME HINGE REINFORCEMENT	STEEL
29	COLUMBIA DOOR BOTTOM SWEEP #2580	ALUMINIUM
30	MASONRY 'TEE' ANCHOR (MESKER PFMT5)	STEEL
31	UNIVERSAL WALL ANCHOR (PS-241)	STEEL
40	THRESHOLD NATIONAL GUARD PRODUCTS, INC. #896	ALUMINIUM
41	THRESHOLD NATIONAL GUARD PRODUCTS, INC. #950	ALUMINIUM
45	95WHA DOOR SWEEP NATIONAL GUARD PRODUCTS, INC.	ALUMINIUM
46	#8 X 3/4" PHILIPS HEAD SMS	STEEL
46	SCHLAGE LOCK SET ASSEMBLY ND53PD	STEEL
71	DESIGN HARDWARE D1-S SERIES DEADBOLT	STEEL
72	DESIGN HARDWARE "Z" SERIES ENTRY	STEEL
73	86E MORTISE LOCK- ONITY CT SERIES	STEEL
74	86E MORTISE LOCK- ONITY HT SERIES	STEEL
75	86E MORTISE LOCK- ONITY ADVANCE SERIES	STEEL
76	DESIGN HARDWARE D2-S SERIES DEADBOLT	STEEL
77	DESIGN HARDWARE "X" SERIES ENTRY	STEEL



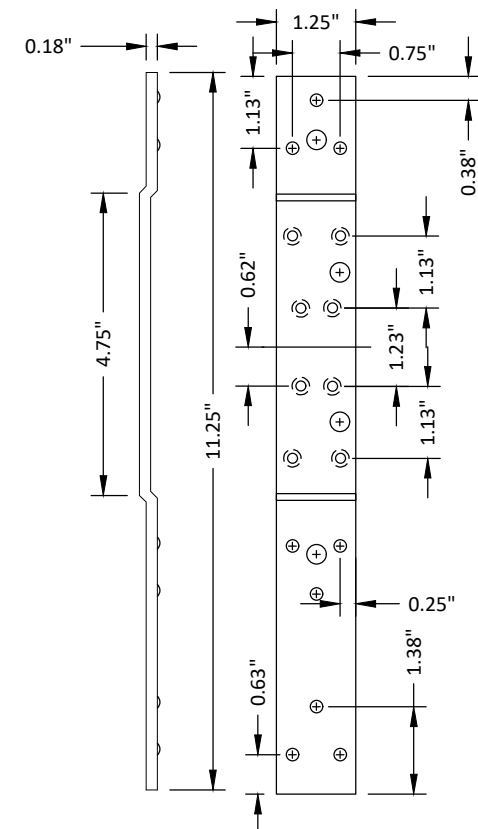
**7 MORTISE BOX REINFORCEMENT**



**5 LOCK BOX REINFORCEMENT**



**23 STANDARD (SHORT) DOOR HINGE**  
Reinforcement middle and bottom hinge



**22 STANDARD (LONG) DOOR HINGE**  
Reinforcement top hinge



**MESKER MBM, LLC**  
3340 STANDWOOD BLVD.  
HUNTSVILLE, AL 35811  
PH: (256) 851-6670

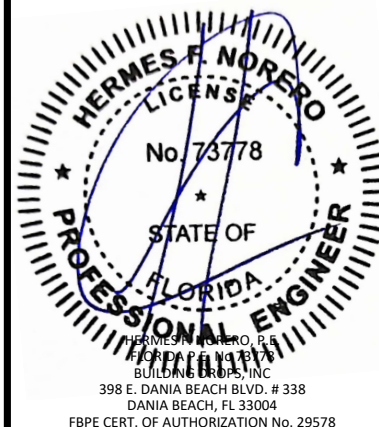
TITLE: "N" SERIES COMMERCIAL SINGLE OPAQUE DOOR - INSWING (HVHZ) (IMPACT)  
BILL OF MATERIALS & COMPONENTS

PREPARED BY: **BUILDING DROPS, INC.**  
398 E. DANIA BEACH BLVD., STE. 338  
DANIA BEACH, FL 33004  
PH: (954) 399-8478  
FAX: (954) 744-4738  
WEB: www.buildingdrops.com



REMARKS	BY	DATE
2023 NAME CHANGE	MG	03/23

THE INSTALLATION DETAILS DESCRIBED HEREIN ARE GENERIC AND MAY NOT REFLECT ACTUAL CONDITIONS FOR A SPECIFIC SITE. IF SITE CONDITIONS CAUSE INSTALLATION TO DEVIATE FROM THE REQUIREMENTS DETAILED HEREIN, A LICENSED ENGINEER OR ARCHITECT SHALL PREPARE SITE SPECIFIC DOCUMENTS FOR USE WITH THIS DOCUMENT.



FL #:	<b>FL11218</b>
DATE:	<b>08.14.08</b>
DWG. BY:	<b>JK</b>
CHK. BY:	<b>FLS</b>
SCALE:	<b>NTS</b>
DWG. #:	<b>MDI014</b>
SECTION:	<b>11</b>
OF 11	